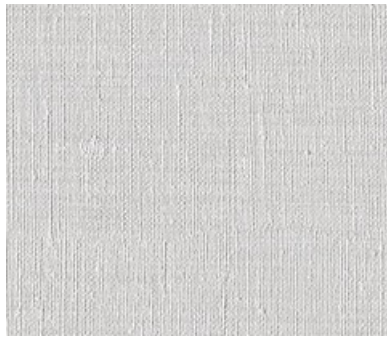
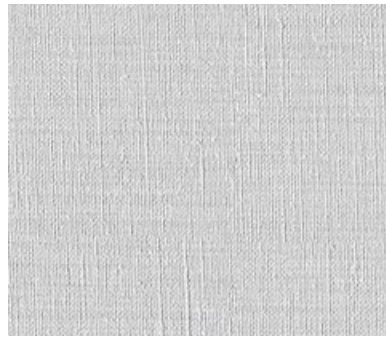




001 Snowpack



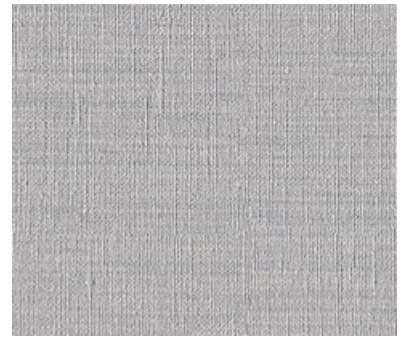
002 Northern



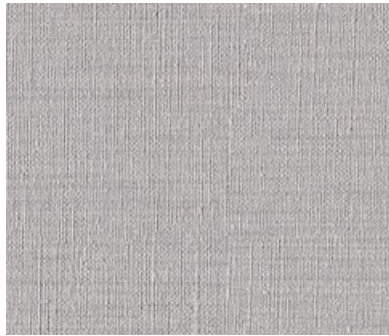
003 Crisp



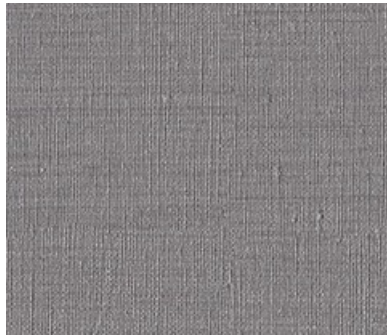
004 Slant



005 Rift



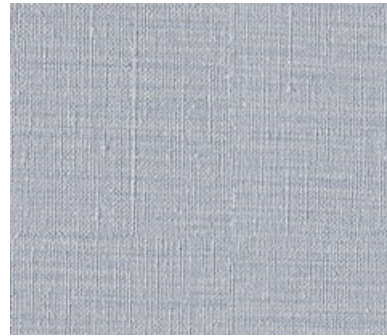
006 Owl



007 Flute



008 Study



009 Comment



010 Skate



011 Herbal



012 Runway



013 Quell



014 Blend



015 Suspense



016 Grasp



017 Net



018 Beyond

Application

Walls

Characteristics


Content: 90% Thermoplastic Olefin, 10% Post-Industrial Recycled Glass
Finish: PFAS-Free Protective Topcoat
Backing: Polyester / Cellulose
Width: 52" (132cm)
Repeat: Non-match
Bolt Size: 30 yards (27 m)
Weight: 18 oz/ly (600 gr/lm)
Traffic: High Traffic
Country of Origin: USA
Note on Mold: Intended for use in buildings designed and maintained to avoid moisture on or within walls.
Application must conform to current Installation Guidelines included in each shipment or available at maharam.com.

Price


\$31.00 / C\$48.00 (FOB destination)
C\$44.50 (FOB origin)

Testing

Flammability: ASTM E84 Adhered
CAN ULC S102 Adhered

Lightfastness: AATCC 16.3, 200+ hours


Maintenance

W-Clean with water-based cleanser.


Environmental

Greenguard Gold Certified
LBC Red List Free
Contains Recycled Content
FR Free
Free of Intentionally Added PFAS

Warranty

10 years. See Terms and Conditions for more information.

© 2024 Maharam

Last updated August 9, 2025