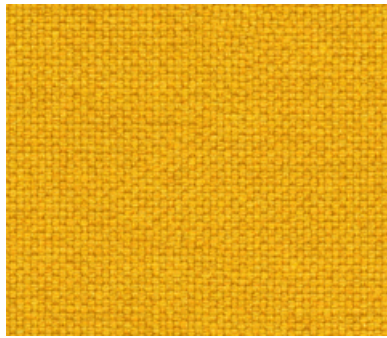
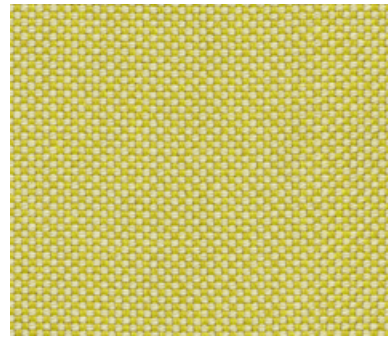


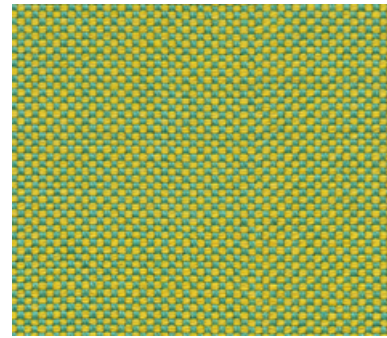
001 Sugar Cane



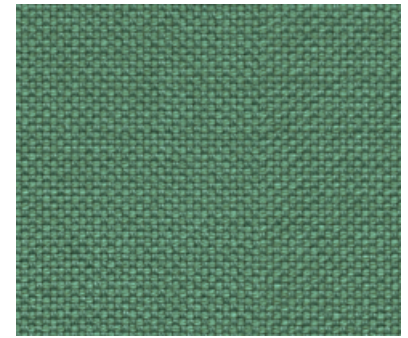
002 Beeswax



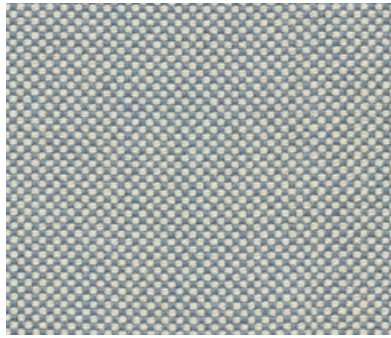
003 Sprout



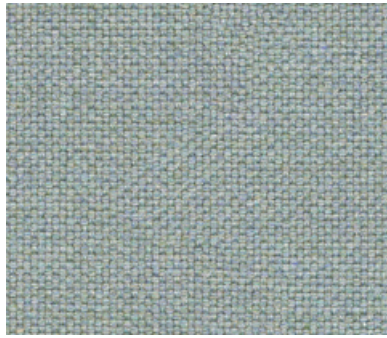
004 Key Lime



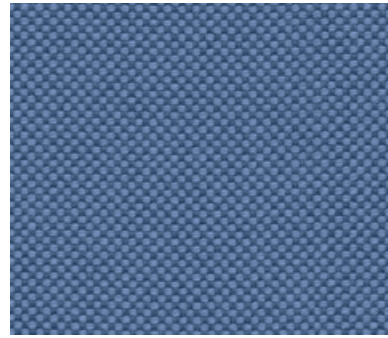
005 Palm



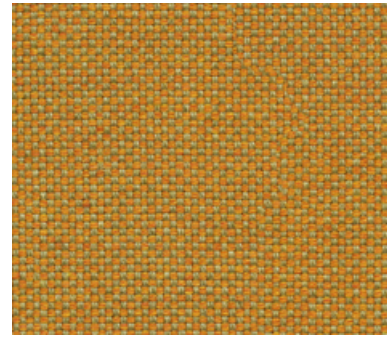
006 Capri



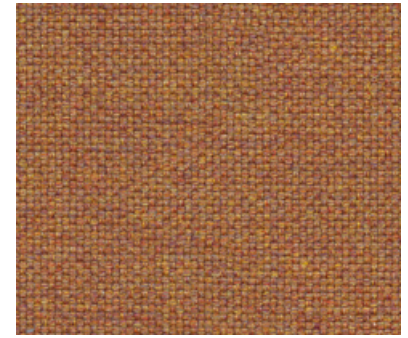
007 Skylight



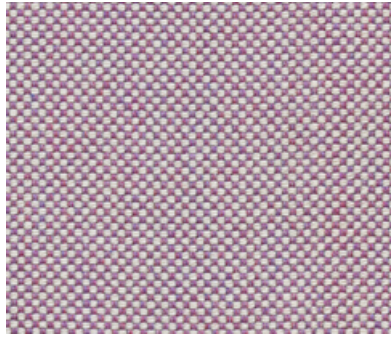
008 Splash



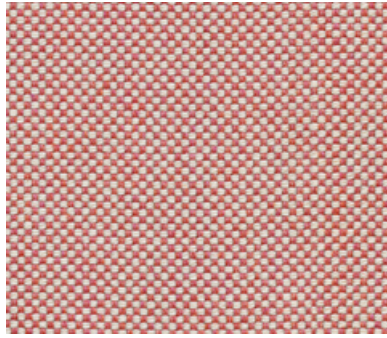
009 Tiger



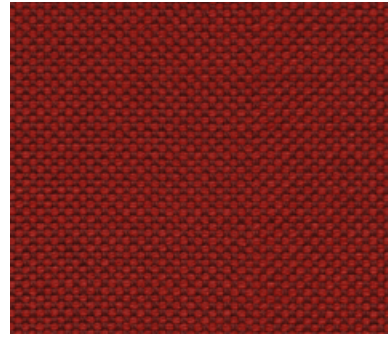
010 Auburn



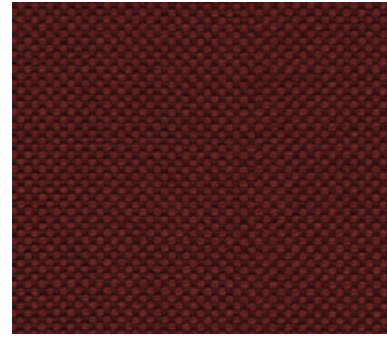
011 Azalea



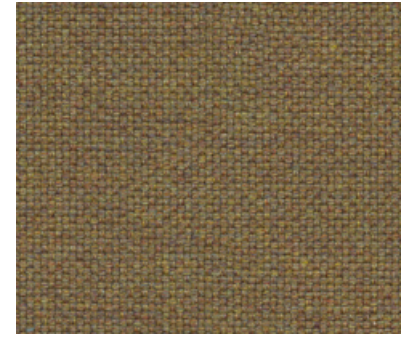
012 Tulip



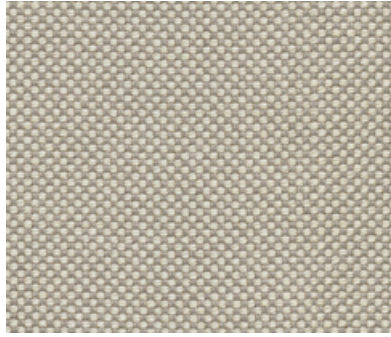
013 Tango



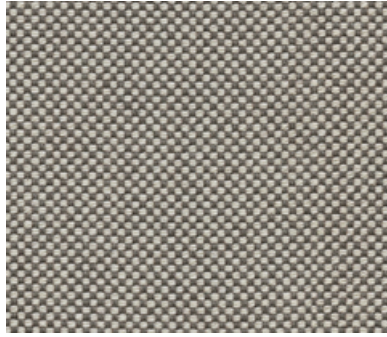
014 Garnet



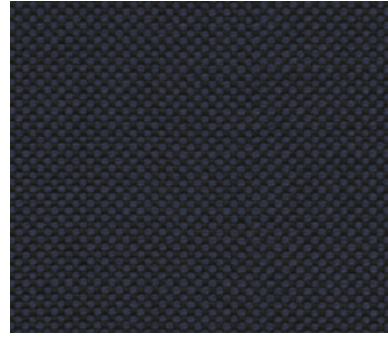
015 Twine



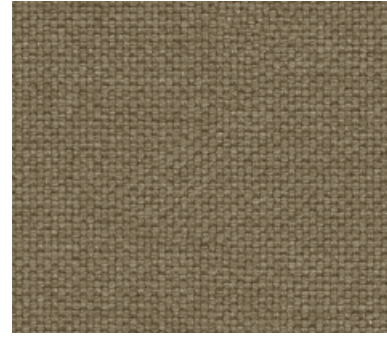
016 Pebble



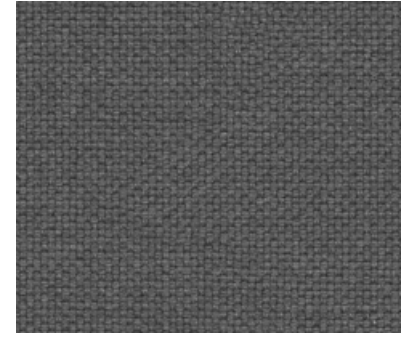
017 Mysterious



018 Royal



019 Oak



020 Charcoal

## Application

Seating

Note: This textile is available as a made-to-order pillow.

## Characteristics

Content: 96% Wool, 4% Solution-Dyed Nylon

Finish: None

Backing: Acrylic

Width: 52" (132cm)

Bolt Size: 40 yards (37 m)

Weight: 21.8 oz/ly (700 gr/lm)

Country of Origin: USA

## Price

\$108.00 / C\$159.00 (FOB destination)

C\$154.50 (FOB origin)

## Testing

Abrasion: ASTM D4157, 70,000 double rubs Wyzenbeek

Note: Abrasion test results exceeding ACT Performance Guidelines are not an indicator of product lifespan.

Multiple factors affect fabric durability and appearance retention.

Flammability: NFPA 260

Lightfastness: AATCC 16.3, 40+ hours



## Maintenance

S-Clean with mild, water-free dry cleaning solvent.

## Environmental

Greenguard Gold Certified

LBC Red List Free

Contains Bio-Based Content

FR Free

Free of Intentionally Added PFAS

## Warranty

3 years. See Terms and Conditions for more information.

© 2017 Knoll, Inc.

Last updated May 1, 2025