

Specifications

Apex

466593

maharam

Application

Seating, Outdoor Seating, Upholstered Walls

Characteristics

Content: 100% Solution-Dyed Polyolefin

Finish: None

Additional Finishes Available: Alta, Alta Food & Beverage, Nanotex, Nanotex with Impermeable Barrier, Stain Repellent Finish

Backing: None

Width: 54" (137cm)

Repeat: 28 1/4" V, 3/4" H

(72cm V, 2cm H)

Railroaded Repeat: 3/4" V, 28 1/4" H

(2cm V, 72cm H)

Bolt Size: 60 yards (55 m)

Weight: 9.8 oz/ly (300 gr/lm)

Country of Origin: USA

Note: Shown railroaded. Reversible.

Price

\$72.00 / C\$106.50 (FOB destination) / C\$103.00 (FOB origin)

Maintenance

W/S/B-Clean with water-based cleanser; mild, water-free dry cleaning solvent, or diluted household bleach.



Testing

Abrasion: ASTM D4157, 100,000 Double Rubs

Note: Abrasion test results exceeding ACT Performance Guidelines are not an indicator of product lifespan.

Multiple factors affect fabric durability and appearance retention.

Flammability: ASTM E84 Unadhered

BS 5852 Crib 5*

CAL 117-2013

EN 1021-1*

EN 1021-2*

GB/T 17591

*passes with additional treatment

Lightfastness: AATCC 169, 1,500+ hours



Specifications

Apex

466593

maharam

Environmental

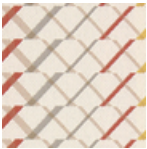
Greenguard Gold Certified
LBC Red List Free
REACH Compliant
Solution-Dyed Textile
FR Free
Free of Intentionally Added PFAS

Warranty

5 years. Warranty for outdoor application applies to color loss and fiber strength only.

© 2022 Maharam

Complete product information at maharam.com
800.645.3943



009 Croton



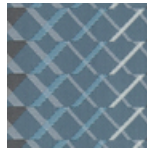
010 Clever



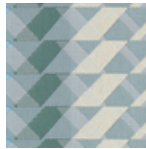
011 Firepit



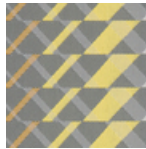
012 Resort



013 Splendor



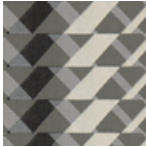
014 Turtle



015 Plantain



016 Snowflake



017 Spectator



018 Lamplii