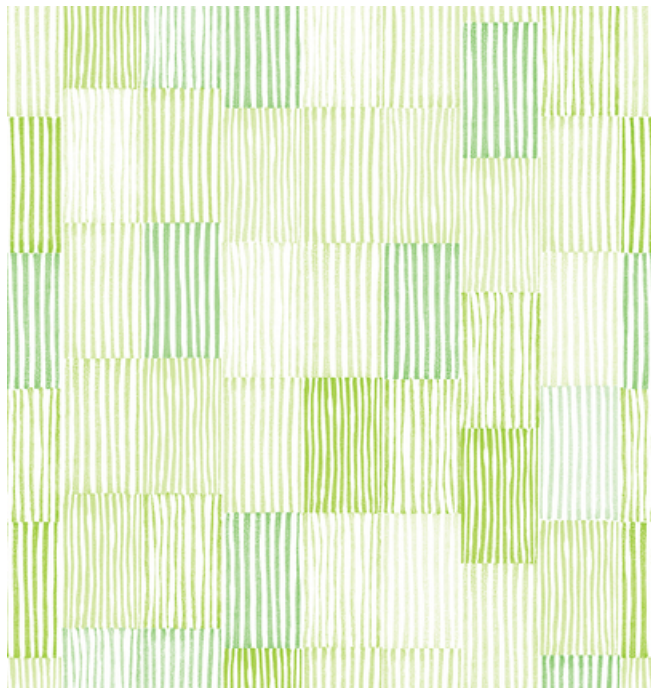
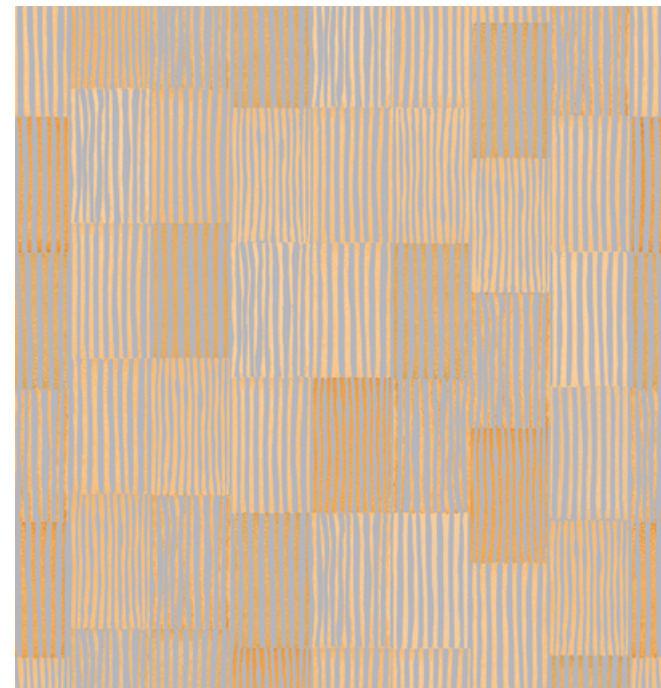




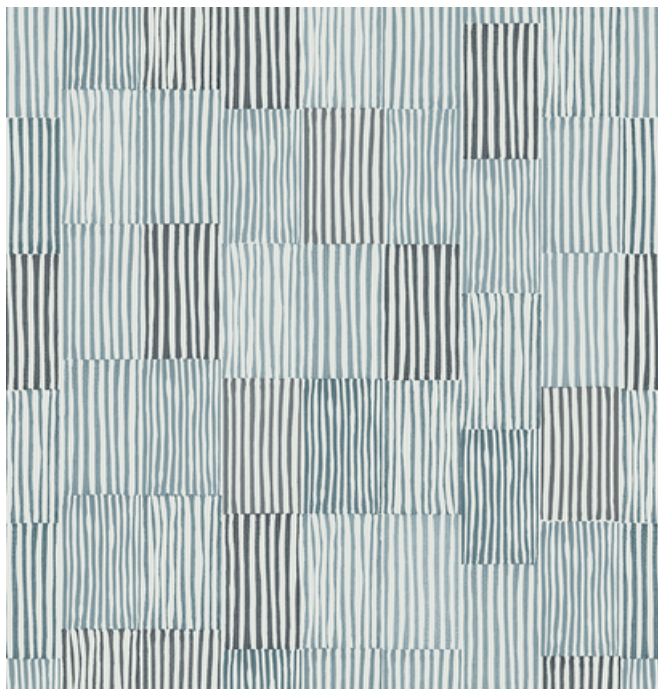
001 Tint



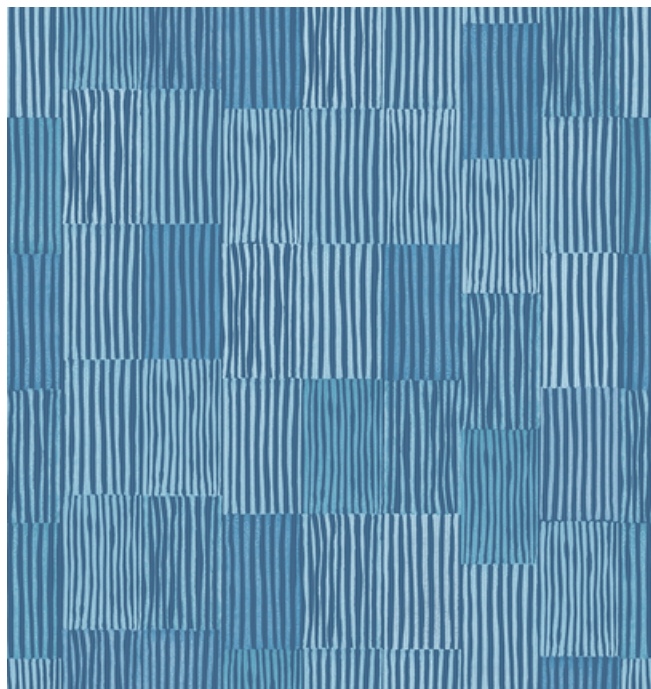
002 Fresh



003 Clay



004 Rock



005 Stream

Design
Rachel and Nick Cope

Application
Walls

Characteristics
Content: 100% Non-Phthalate Vinyl
Finish: None
Backing: Polyester / Cellulose
Width: 50" (127cm)
Repeat: 116" V, 50" H
(295cm V, 127cm H)
Bolt Size: 30 yards (27 m)
Class: Type II
Weight: 20 oz/ly (600 gr/lm)
Traffic: High Traffic
Country of Origin: USA
Note on Mold: Intended for use in buildings designed and maintained to avoid moisture on or within walls.
Application must conform to current Installation Guidelines included in each shipment or available at maharam.com.

Price
\$60.50 / C\$90.00 (FOB destination)
C\$86.50 (FOB origin)

Testing
Flammability: ASTM E84 Adhered

Lightfastness: AATCC 16.3, 40+ hours
☀️🔥💧🌟

Maintenance
W-Clean with water-based cleanser.

Environmental
Greenguard Certified
Free of Intentionally Added PFAS

Warranty
10 years. See Terms and Conditions for more information.

© 2021 Knoll, Inc.

Last updated August 27, 2025