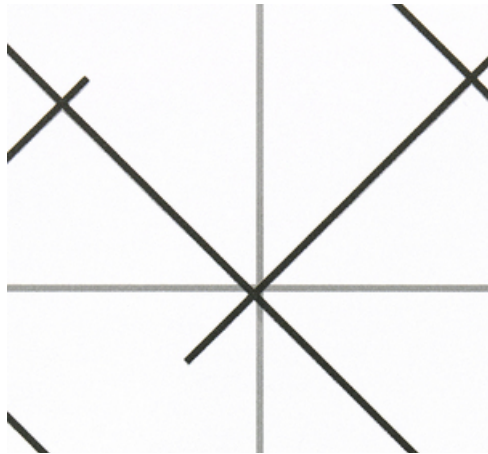
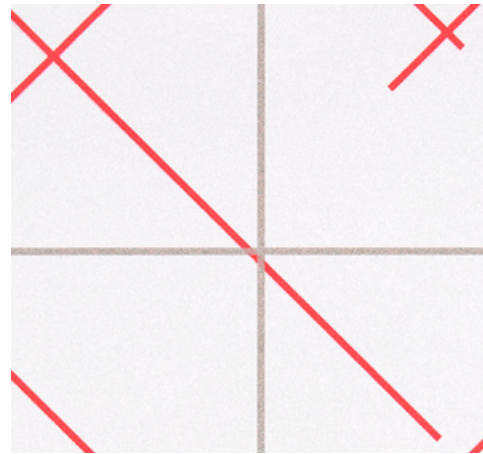




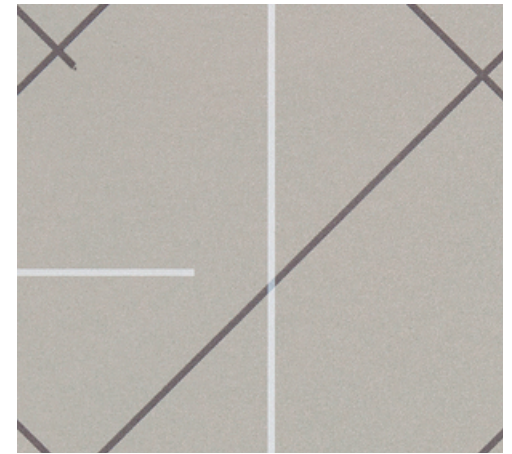
001 Foli



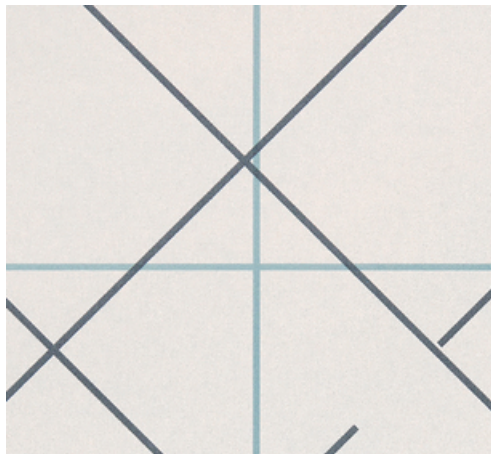
002 Hexagon



003 Cardinal



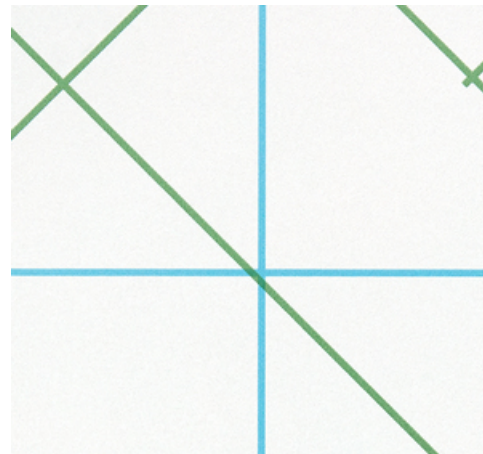
004 Mainframe



005 Keen



006 Persimmon



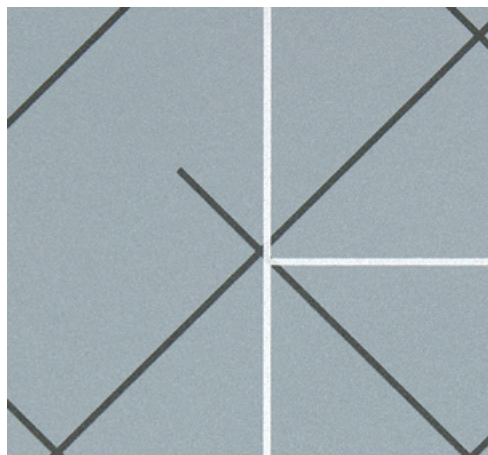
007 Caladium



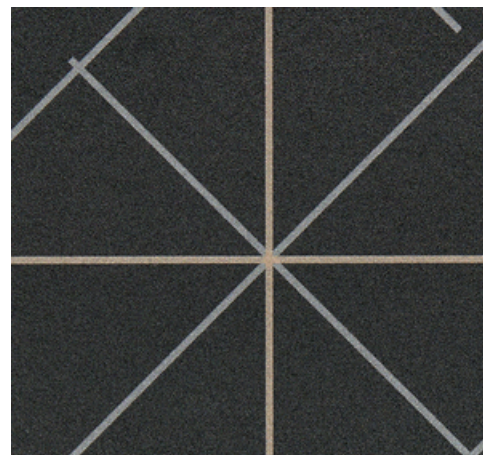
008 Morpho



009 Tripod



010 Port



011 Mirage

300098 Axis

maharam

Application

Walls

Characteristics

Content: 100% Non-Phthalate Vinyl
Finish: Protective Topcoat
Backing: Polyester / Cellulose
Width: 52" (132cm)
Repeat: 24" V, 52" H
(61cm V, 132cm H)
Bolt Size: 30 yards (27 m)
Class: Type II
Weight: 20 oz/ly (600 gr/lm)
Traffic: High Traffic
Country of Origin: USA
Note on Mold: Intended for use in buildings designed and maintained to avoid moisture on or within walls.
Application must conform to current Installation Guidelines included in each shipment.

Price

\$33.50 / C\$51.50 (FOB destination)
C\$48.00 (FOB origin)

Testing

Flammability: AS/NZS 3837 Adhered
ASTM E84 Adhered
CAN ULC S102 Adhered
EN 13501 Adhered*
GB 8624 Adhered
ISO 5660 Adhered
*passes with additional treatment

Lightfastness: AATCC 16.3, + hours



Maintenance

W-Clean with water-based cleanser.

Environmental

DMF Free

Warranty

10 years. See Terms and Conditions for more information.

© 2021 Maharam

Last updated October 14, 2025