



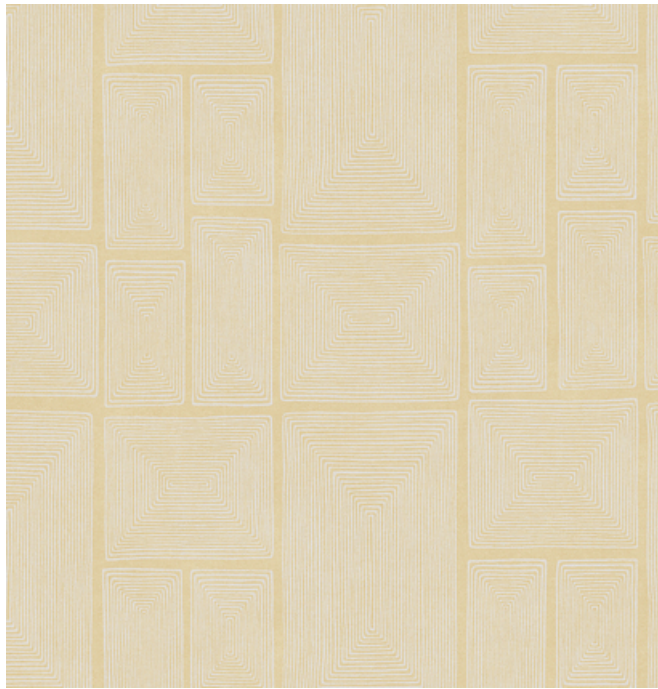
001 Gesso



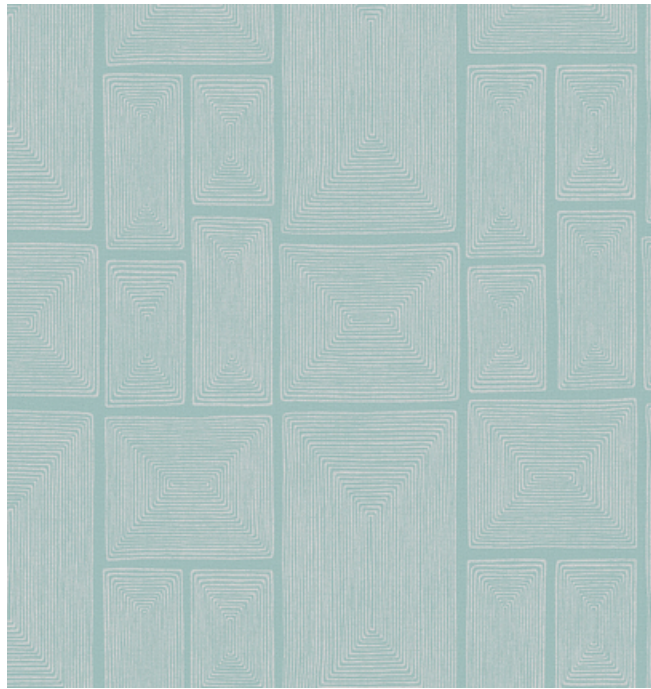
002 Canvas



003 Linen



004 Fresco



005 Etching



006 Statue

300252 Campagna Wall by Angelo Testa, 1947

Knoll Textiles

Design
Angelo Testa, 1947

Application
Walls

Characteristics
Content: 76% Thermoplastic Olefin, 24% Post-Industrial Recycled Thermoplastic Olefin
Finish: None
Backing: Polyester/Cotton Osnaburg
Width: 51" (130cm)
Repeat: 25" V, 51" H
(64cm V, 130cm H)
Bolt Size: 30 yards (27 m)
Weight: 20 oz/ly (600 gr/lm)
Traffic: High Traffic
Country of Origin: USA
Note on Mold: Intended for use in buildings designed and maintained to avoid moisture on or within walls.
Application must conform to current Installation Guidelines included in each shipment or available at maharam.com.

Price
\$38.00 / C\$58.00 (FOB destination)
C\$54.50 (FOB origin)

Testing
Flammability: ASTM E84 Adhered
CAN ULC S102 Adhered

Lightfastness: AATCC 16.3, 200+ hours
☀️🔥💧🌟

Maintenance
W-Clean with water-based cleanser.

Environmental
Greenguard Gold Certified
Contains Recycled Content
FR Free
Free of Intentionally Added PFAS

Warranty
10 years. See Terms and Conditions for more information.

© 2022 Knoll, Inc.

Last updated August 21, 2025