

Specifications  
Chroma  
by Hella Jongerius  
466303

**Application**

Seating

Note: This textile is available as a made-to-order pillow.

**Characteristics**

Content: 100% Wool

Finish: None

Additional Finishes Available: Alta, Alta Food & Beverage, Nanotex, Nanotex with Impermeable Barrier, Stain Repellent Finish

Backing: None

Width: 54" (137cm)

Repeat: 1/4" V, 4" H

(1cm V, 10cm H)

Bolt Size: 20 yards (18 m)

Weight: 43.8 oz/ly (1400 gr/lm)

Country of Origin: Great Britain

**Price**

\$366.00 / C\$526.50 (FOB destination) / C\$523.00 (FOB origin)

**Maintenance**

S-Clean with mild, water-free dry cleaning solvent.

**Testing**

Abrasion: ASTM D4966, 100,000 cycles Martindale

Note: Abrasion test results exceeding ACT Performance Guidelines are not an indicator of product lifespan. Multiple factors affect fabric durability and appearance retention.

Flammability: CAL 117-2013

Lightfastness: AATCC 16.3, 40+ hours



Specifications  
Chroma  
by Hella Jongerius  
466303

**Environmental**

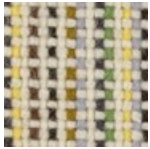
Greenguard Gold Certified  
Healthier Hospitals Compliant  
LBC Red List Free  
Contains Bio-Based Content  
Produced in an ISO 14001 Facility  
FR Free  
Free of Intentionally Added PFAS

**Warranty**

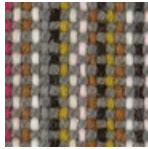
3 years.

© 2015 Maharam

Complete product information at [maharam.com](http://maharam.com)  
800.645.3943



001 Ivory



002 Pepper