

Specifications
Cleft
300036

maharam

Application

Walls

Characteristics

Content: 100% Non-Phthalate Vinyl

Finish: None

Backing: Cotton Osnaburg

Width: 52" (132cm)

Repeat: Non-match

Bolt Size: 30 yards (27 m)

Class: Type II

Weight: 25 oz/ly (800 gr/lm)

Traffic: High Traffic

Country of Origin: USA

Note on Mold: Intended for use in buildings designed and maintained to avoid moisture on or within walls.

Application must conform to current Installation Guidelines included in each shipment or available at maharam.com.

Price

\$30.50 / C\$48.25 (FOB destination) / C\$43.75 (FOB origin)

Maintenance

W-Clean with water-based cleanser.



Testing

Flammability: AS/NZS 3837 Adhered

ASTM E84 Adhered

CAN ULC S102 Adhered

GB 8624 Adhered*

*passes with additional treatment

Lightfastness: AATCC 16.3, 200+ hours



Specifications
Cleft
300036

maharam

Environmental

Greenguard Certified
REACH Compliant
Free of Intentionally Added PFAS
Non-Phthalate Vinyl

Warranty

10 years.

© 2019 Maharam

Complete product information at maharam.com
800.645.3943



001 Dazzle



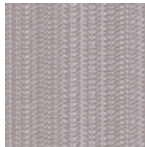
002 Macrame



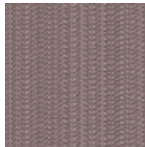
003 Sawdust



004 Masterpiece



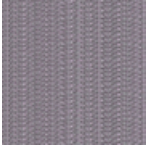
005 Meander



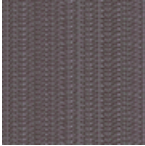
006 Sear



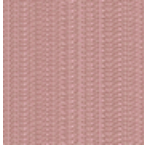
007 Locomotion



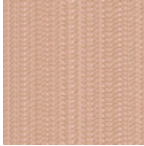
008 Linger



009 Cellar



010 Moscato



011 Upbeat



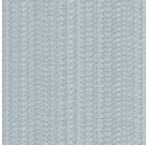
012 Candlelight



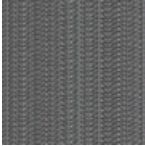
013 Midfield



014 Martini



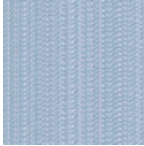
015 Balance



016 Greenhouse



017 Malachite



018 Windmill



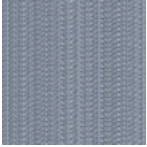
019 Regent



020 Skyscraper



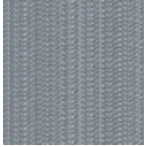
021 Mystery



022 Deluxe



023 Locket



024 Thundercloud



025 Wrought