



Specifications
Color Collage
466716

Application

Seating

Note: This textile is available as a made-to-order pillow.

Characteristics

Content: 74% Cotton, 12% Acrylic, 6% Polyester, 5% Nylon, 3% Rayon

Finish: None

Backing: None

Width: 55" (140cm)

Repeat: 19 3/4" V, 23" H

(50cm V, 58cm H)

Railroaded Repeat: 23" V, 19 3/4" H

(58cm V, 50cm H)

Bolt Size: 22 yards (20 m)

Weight: 34.5 oz/ly (1100 gr/lm)

Country of Origin: Belgium

Note: Shown railroaded.

Price

\$118.00 / C\$172.25 (FOB destination) / C\$168.75 (FOB origin)

Maintenance

S-Clean with mild, water-free dry cleaning solvent.

Testing

Abrasion: ASTM D4157, 100,000 double rubs Wyzenbeek

Note: Abrasion test results exceeding ACT Performance Guidelines are not an indicator of product lifespan.

Multiple factors affect fabric durability and appearance retention.

Flammability: CAL 117-2013

NFPA 260

Lightfastness: AATCC 16.3, 40+ hours



Specifications

Color Collage

466716



Environmental

Greenguard Gold Certified
LBC Red List Free
Contains Bio-Based Content
FR Free
Free of Intentionally Added PFAS

Warranty

3 years.

© 2019 Knoll, Inc.

Complete product information at [knolltextiles.com](https://www.knolltextiles.com)
800.645.3943



001 Toucan



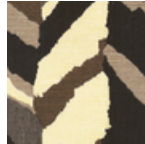
002 Canopy



003 Trapeze



004 Butterfly



005 Mockingbird



006 Equator