

Specifications
Colorfield
by Hella Jongerius
466315

Application

Seating

Note: This textile is available as a made-to-order pillow.

Characteristics

Content: 92% Wool, 8% Nylon

Finish: None

Additional Finishes Available: Alta, Alta Food & Beverage, Nanotex, Nanotex with Impermeable Barrier, Stain Repellent Finish

Backing: None

Width: 54" (137cm)

Repeat: 15 1/2" V, 27 3/4" H
(39cm V, 70cm H)

Bolt Size: 22 yards (20 m)

Weight: 31.8 oz/ly (1000 gr/lm)

Country of Origin: Great Britain

Price

\$307.00 / C\$442.25 (FOB destination) / C\$438.75 (FOB origin)

Maintenance

S-Clean with mild, water-free dry cleaning solvent.



Testing

Abrasion: ASTM D4966, 50,000 cycles Martindale

Note: Abrasion test results exceeding ACT Performance Guidelines are not an indicator of product lifespan. Multiple factors affect fabric durability and appearance retention.

Flammability: CAL 117-2013

Lightfastness: AATCC 16.3, 40+ hours



Specifications
Colorfield
by Hella Jongerius
466315

Environmental

Greenguard Gold Certified
Healthier Hospitals Compliant
LBC Red List Free
Contains Bio-Based Content
Produced in an ISO 14001 Facility
FR Free
Free of Intentionally Added PFAS

Warranty

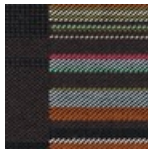
3 years.

© 2015 Maharam

Complete product information at maharam.com
800.645.3943



001 Pumice



002 Walnut