

# Specifications

## Commuter Cloth

### 466879

**Application**

Seating, Systems, Upholstered Walls

Note: This textile is available as a made-to-order pillow.

**Characteristics**

Content: 75% Post-Consumer Recycled Polyester, 25% Polyester

Finish: Stain Repellent

Backing: None

Width: 56" (142cm)

Bolt Size: 50 yards (46 m)

Weight: 16 oz/ly (500 gr/lm)

Country of Origin: USA

**Price**

\$35.00 / C\$53.50 (FOB destination) / C\$50.00 (FOB origin)

**Maintenance**

W/S-Clean with water-based cleanser or mild, water-free dry cleaning solvent.

**Testing**

Abrasion: ASTM D4157, 70,000 double rubs Wyzenbeek

Note: Abrasion test results exceeding ACT Performance Guidelines are not an indicator of product lifespan.

Multiple factors affect fabric durability and appearance retention.

Flammability: ASTM E84 Unadhered

CAL 117-2013

NFPA 260

Lightfastness: AATCC 16.3, 40+ hours



Specifications  
Commuter Cloth  
466879

**Knoll Textiles**

**Environmental**

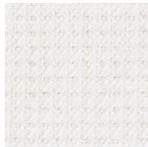
Greenguard Gold Certified  
GRS Certified Content  
Contains Recycled Content  
FR Free

**Warranty**

3 years.

© 2013 Knoll, Inc.

Complete product information at [knolltextiles.com](http://knolltextiles.com)  
800.645.3943



001 White Cap



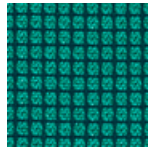
003 Cobblestone



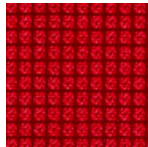
004 Slicker



005 Lime



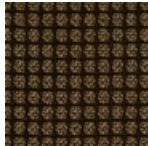
006 Cabana



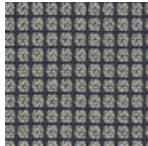
009 Balloon



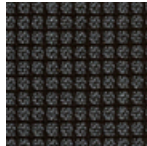
010 Eve



011 Boulevard



012 Whistle



013 Puddle