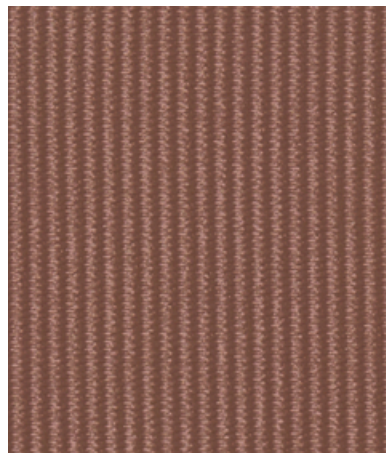


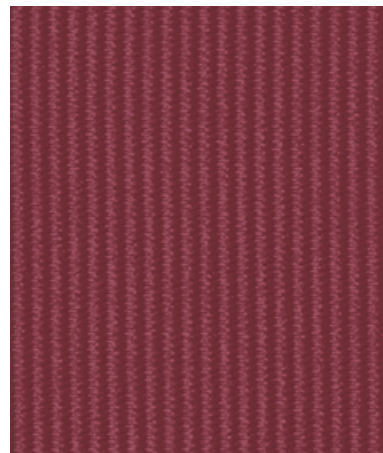
001 Cameo



002 Earthwork



003 Trace



004 Lacquer



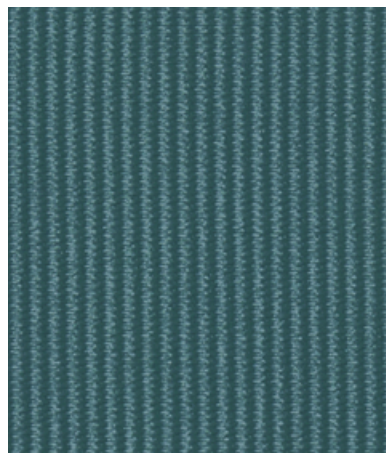
005 Frieze



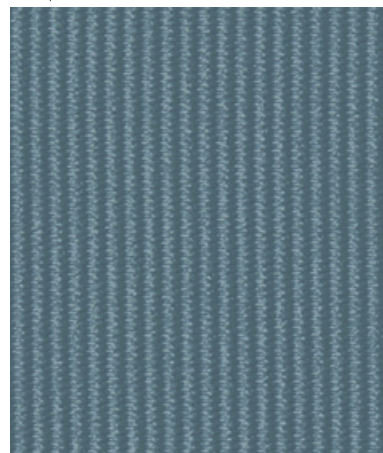
006 Glaze



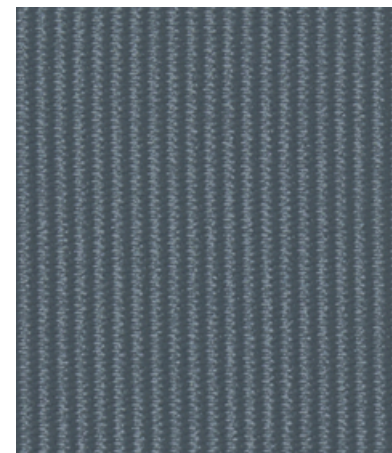
007 Still Life



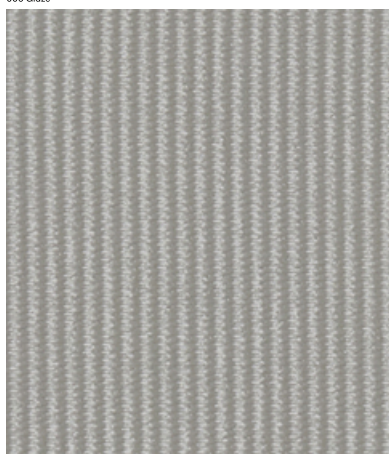
008 Wavelet



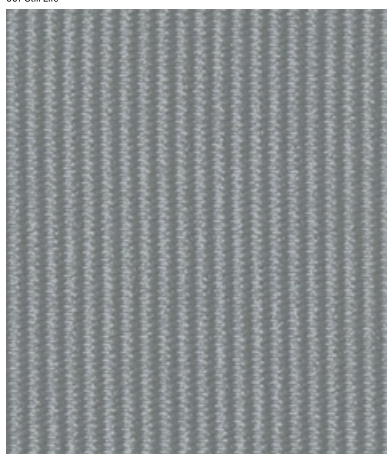
009 Ripple



010 Sculpt



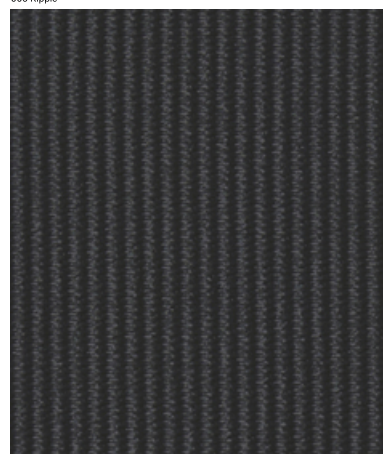
011 Crystal



012 Porcelain



013 Pebble



014 Sumi

466950 Contour

**Knoll**Textiles

<b>Application</b>	<b>Price</b>	<b>Maintenance</b>
Seating	\$45.50 / C\$68.50 (FOB destination) C\$65.00 (FOB origin)	W/S/B-Clean with water-based cleanser; mild, water-free dry cleaning solvent, or diluted household bleach.
<b>Characteristics</b>	<b>Testing</b>	<b>Environmental</b>
Content: 100% Non-Phthalate Vinyl	Abrasion: ASTM D4157, 100,000 double rubs	Greenguard Certified
Finish: None	Wyzenbeek	FR Free
Backing: Polyester	Note: Abrasion test results exceeding ACT Performance Guidelines are not an indicator of product lifespan.	Free of Intentionally Added PFAS
Width: 54" (137cm)	Multiple factors affect fabric durability and appearance retention.	<b>Warranty</b>
Bolt Size: 25 yards (23 m)		5 years. See Terms and Conditions for more information.
Weight: 35 oz/ly (1100 gr/lm)		
Country of Origin: Korea		
Note: Shown railroaded.		
	Flammability: CAL 117-2013 NFPA 260	© 2023 Knoll, Inc.
	Lightfastness: AATCC 16.3, 200+ hours	Last updated August 29, 2025
	