

# Specifications

Cumulus

466609

**maharam**

## Application

Seating, Upholstered Walls

Note: This textile is available as a made-to-order pillow.

## Characteristics

Content: 100% Rapidly Degradable Post-Consumer Recycled Polyester

Finish: None

Additional Finishes Available: Alta, Alta Food & Beverage, Crypton, Nanotex, Nanotex with Impermeable Barrier, Stain Repellent Finish

Backing: None

Width: 54" (137cm)

Bolt Size: 40 yards (37 m)

Weight: 16.2 oz/ly (500 gr/lm)

Country of Origin: Canada

Note: Reversible.

## Price

\$45.50 / C\$68.50 (FOB destination) / C\$65.00 (FOB origin)

## Maintenance

W/S/B-Clean with water-based cleanser; mild, water-free dry cleaning solvent, or diluted household bleach.

☒ △ ☒ ☒ Ⓜ

## Testing

Abrasion: ASTM D4157, 100,000 Double Rubs

Note: Abrasion test results exceeding ACT Performance Guidelines are not an indicator of product lifespan.

Multiple factors affect fabric durability and appearance retention.

Acoustics: ASTM C423, 0.85 NRC

Flammability: ASTM E84 Unadhered

BS 5852 Crib 5\*

CAL 117-2013

CAN ULC S102 Unadhered

EN 1021-1\*

EN 1021-2\*

EN 13501 Unadhered\*

NFPA 701\*

\*passes with additional treatment

Lightfastness: AATCC 16.3, 40+ hours

☒ ☀ ☕ ☘ ☒

Specifications  
Cumulus  
466609

**maharam**

**Environmental**

Facts Gold Certified  
Greenguard Gold Certified  
LBC Red List Free  
REACH Compliant  
Contains Recycled Content  
FR Free  
Free of Intentionally Added PFAS



**Warranty**

5 years: Indoor Seating  
3 years: Upholstered Walls.

© 2023 Maharam

Complete product information at [maharam.com](https://maharam.com)  
800.645.3943



001 Lenticular



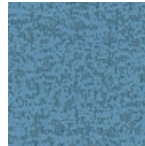
002 Provoke



003 Matrix



004 Saturate



005 Anabranh



006 Outward



007 Backwoods



008 Dreamer



009 Incandescent



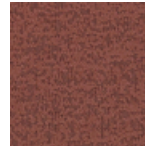
010 Minute



011 Bungalow



012 Temperature



013 Stiletto



014 Precise



015 Floccus