

Specifications

Delite

466730

Application

Seating, Systems, Upholstered Walls

Note: This textile is available as a made-to-order pillow.

Characteristics

Content: 50% Polyester, 50% Post-Consumer Recycled Polyester

Finish: None

Additional Finishes Available: Nanotex

Backing: None

Width: 54" (137cm)

Bolt Size: 50 yards (46 m)

Weight: 16.5 oz/ly (500 gr/lm)

Country of Origin: USA

Price

\$27.00 / C\$42.25 (FOB destination) / C\$38.75 (FOB origin)

Maintenance

W/S-Clean with water-based cleanser or mild, water-free dry cleaning solvent.

Testing

Abrasion: ASTM D4157, 90,000 double rubs Wyzenbeek

Acoustics: ASTM C423, 0.65 NRC

Flammability: ASTM E84 Unadhered

BS 5852 Crib 5*

CAL 117-2013

CAN ULC S102 Unadhered

EN 13501 Unadhered*

NFPA 260

*passes with additional treatment

Lightfastness: AATCC 16.3, + hours



Specifications

Delite

466730

Knoll Textiles

Environmental

Facts Compliant

Greenguard Gold Certified

GRS Certified Content

Healthier Hospitals Compliant

LBC Red List Free

REACH Compliant

Contains Recycled Content

FR Free

Free of Intentionally Added PFAS

Made In USA

Warranty

3 years.

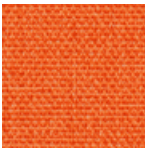
© 2015 Knoll, Inc.

Complete product information at knolltextiles.com

800.645.3943

Specifications
Delite
466730

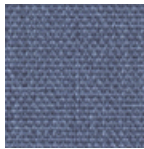
Knoll Textiles



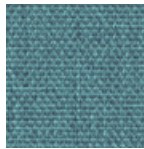
001 Orange



002 Red



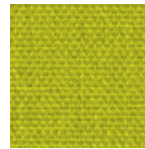
003 Catalina



004 Turquoise



005 Parrot



006 Green



007 Cinder



008 Stone



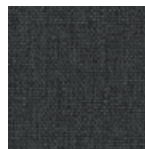
009 Gray



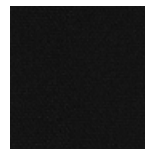
010 Slate



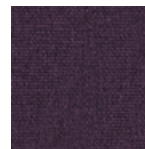
011 Tobacco



012 Charcoal



013 Onyx



014 Purple



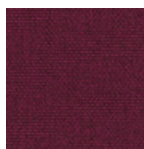
015 Backcountry



017 Marmalade



018 Cozy



019 Gather



020 Estuary



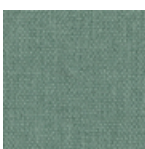
021 Oceanfront



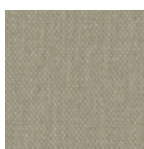
022 Habitat



023 Explorer



024 Biome



025 Demure



026 Armor



027 Thunderstorm



028 Ninja



029 Quinoa



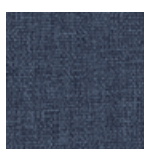
030 Warbler



031 Syrup



032 Coral



033 Galactic



034 Bayou



035 Journey