

Specifications  
Dot Pattern  
by Charles and Ray Eames, 1947  
458300

**Application**

Seating

Note: This textile is available as a made-to-order pillow.

**Characteristics**

Content: 71% Cotton, 29% Polyester  
Finish: PFAS-Free Water Repellent  
Additional Finishes Available: Alta, Alta Food & Beverage, Antimicrobial Stain Resistant Finish with Impermeable Backing, Nanotex, Nanotex with Impermeable Barrier  
Backing: None  
Width: 55" (140cm)  
Repeat: 15 1/4" V, 26" H  
(39cm V, 66cm H)  
Bolt Size: 38 yards (35 m)  
Weight: 16.8 oz/ly (500 gr/lm)  
Country of Origin: Germany

**Price**

\$147.00 / C\$213.50 (FOB destination) / C\$210.00 (FOB origin)

**Maintenance**

S-Clean with mild, water-free dry cleaning solvent.



**Testing**

Abrasion: ASTM D4157, 63,000 double rubs Wyzenbeek  
Note: Abrasion test results exceeding ACT Performance Guidelines are not an indicator of product lifespan.  
Multiple factors affect fabric durability and appearance retention.

Flammability: AS/NZS 1530.3  
AS/NZS 3837 Unadhered  
BS 5852 Crib 5\*  
CAL 117-2013  
EN 1021-1\*  
EN 1021-2\*  
NFPA 260  
UNI 9175\*  
\*passes with additional treatment

Lightfastness: AATCC 16.3, 40+ hours



## Specifications

### Dot Pattern

by Charles and Ray Eames, 1947

458300

#### **Environmental**

Greenguard Gold Certified

Oeko-Tex Certified

Healthier Hospitals Compliant

LBC Red List Free

REACH Compliant

Contains Bio-Based Content

FR Free

Free of Intentionally Added PFAS

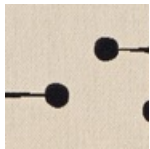
#### **Warranty**

3 years.

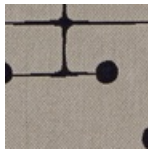
© 2000 Eames Office. A Charles and Ray Eames Design™ fabric. All rights reserved.

Complete product information at [maharam.com](https://maharam.com)

800.645.3943



001 Document



002 Taupe



004 Red



005 Navy