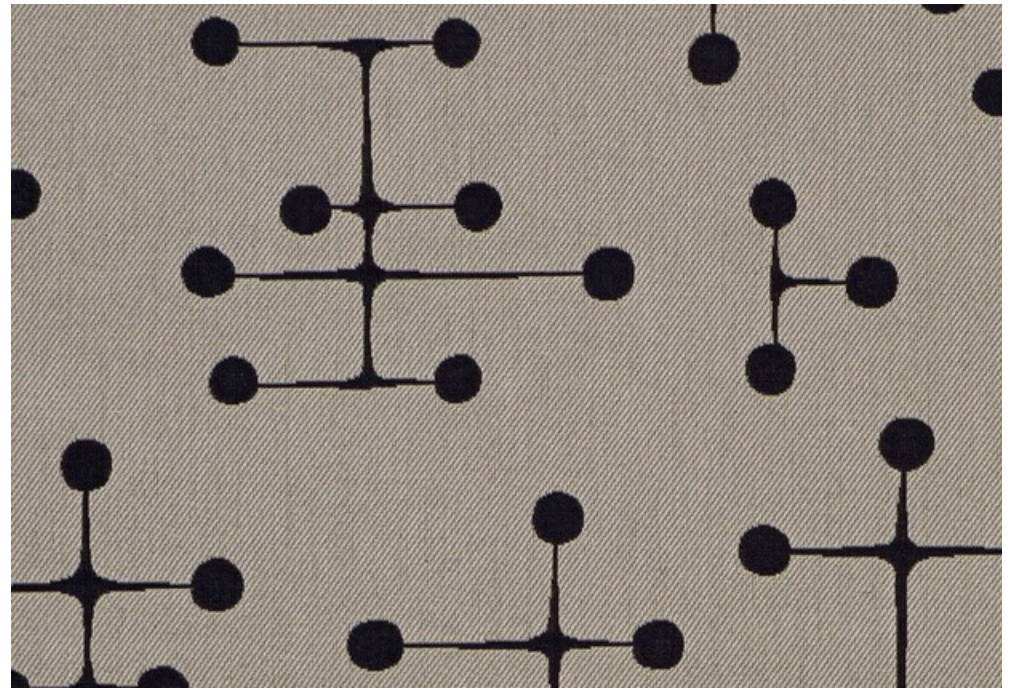
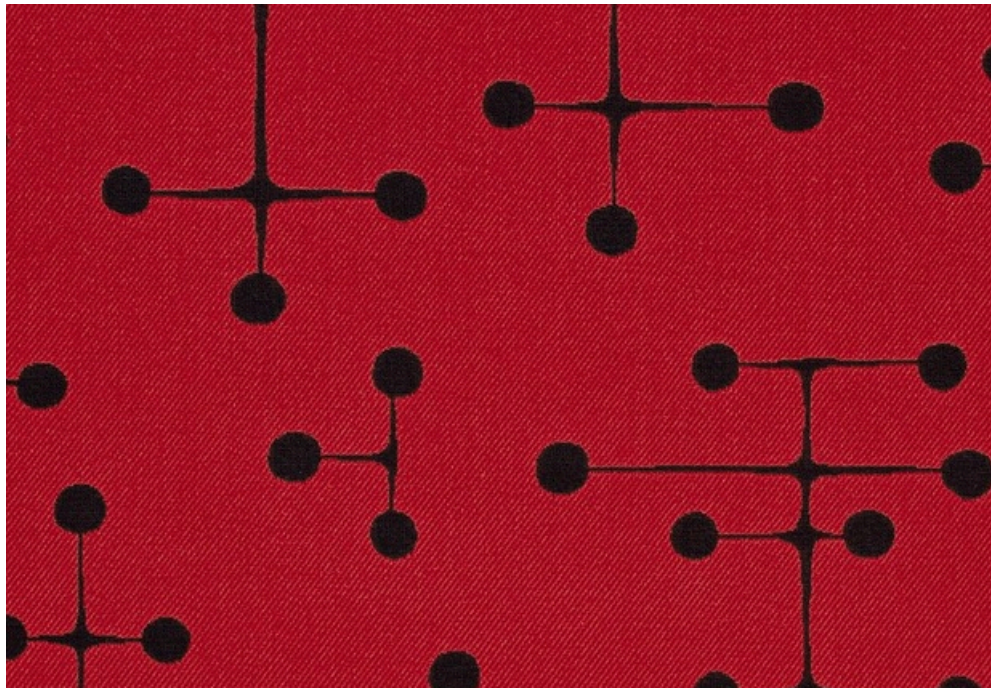


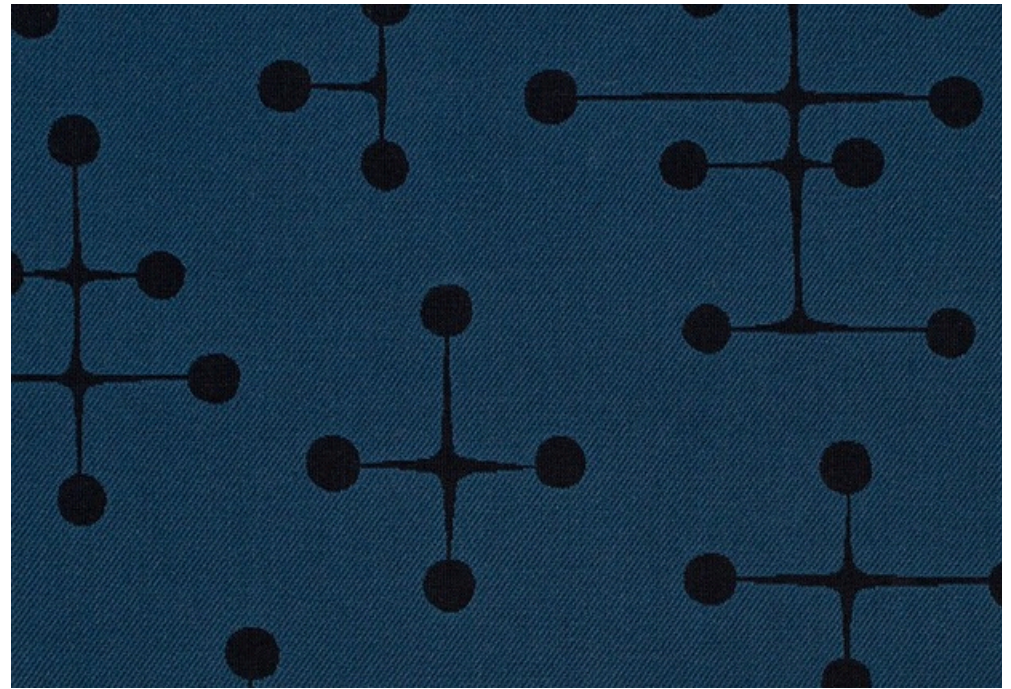
001 Document



002 Taupe



004 Red



005 Navy

458300 Dot Pattern by Charles and Ray Eames, 1947

**maharam**



Design

Charles and Ray Eames, 1947

Collection

Textiles of the 20th Century

Application

Seating  
Note: This textile is available as a made-to-order pillow.

Characteristics

Content: 71% Cotton, 29% Polyester  
Finish: PFAS-Free Water Repellent  
Additional Finishes Available: Alta, Alta Food & Beverage, Antimicrobial Stain Resistant Finish with Impermeable Backing, Nanotex, Nanotex with Impermeable Barrier  
Backing: None  
Width: 55" (140cm)  
Repeat: 15 1/4" V, 26" H (39cm V, 66cm H)  
Bolt Size: 38 yards (35 m)  
Weight: 16.8 oz/ly (500 gr/lm)  
Country of Origin: Germany

Price

\$146.00 / C\$212.25 (FOB destination)  
C\$208.75 (FOB origin)

Testing

Abrasion: ASTM D4157, 63,000 double rubs Wyzenbeek  
Note: Abrasion test results exceeding ACT Performance Guidelines are not an indicator of product lifespan. Multiple factors affect fabric durability and appearance retention.

Flammability: AS/NZS 1530.3  
AS/NZS 3837 Unadhered  
BS 5852 Crib 5\*  
CAL 117-2013  
EN 1021-1\*  
EN 1021-2\*  
NFPA 260  
UNI 9175\*  
\*passes with additional treatment

Lightfastness: AATCC 16.3, 40+ hours



Maintenance

S-Clean with mild, water-free dry cleaning solvent.  
☒☒☒☒Ⓟ

Environmental

Greenguard Gold Certified  
Oeko-Tex Certified  
Healthier Hospitals Compliant  
LBC Red List Free  
REACH Compliant  
Contains Bio-Based Content  
FR Free  
Free of Intentionally Added PFAS

Brief

Dot Pattern was designed by Charles and Ray Eames for a 1947 textile competition at the Museum of Modern Art.

Warranty

3 years. See Terms and Conditions for more information.

© 2000 Eames Office. A Charles and Ray Eames Design™ fabric. All rights reserved.

Last updated August 3, 2025