

Specifications

Edges

by Alexander Girard, 1961

466476

Application

Seating

Note: This textile is available as a made-to-order pillow.

Characteristics

Content: 66% Cotton, 30% Solution-Dyed Nylon, 4% Polyester

Finish: Stain Repellent

Additional Finishes Available: Alta, Alta Food & Beverage, Nanotex

Backing: Acrylic

Width: 53" (135cm)

Repeat: 8" V, 7" H

(20cm V, 18cm H)

Bolt Size: 60 yards (55 m)

Weight: 14.4 oz/ly (400 gr/lm)

Country of Origin: USA

Price

\$149.00 / C\$216.50 (FOB destination) / C\$213.00 (FOB origin)

Maintenance

S-Clean with mild, water-free dry cleaning solvent.

☒ ☒ ☒ ☒ Ⓟ

Testing

Abrasion: ASTM D4157, 100,000 double rubs Wyzenbeek

Note: Abrasion test results exceeding ACT Performance Guidelines are not an indicator of product lifespan.

Multiple factors affect fabric durability and appearance retention.

Flammability: BS 5852 Crib 5*

CAL 117-2013

EN 1021-1*

EN 1021-2*

*passes with additional treatment

Lightfastness: AATCC 16.3, 40+ hours

☐ ☀ 🔥 💧 ☆

Specifications

Edges

by Alexander Girard, 1961

466476

maharam

Environmental

Greenguard Gold Certified

REACH Compliant

Contains Bio-Based Content

FR Free

Warranty

3 years.

© 2018 Girard Studio, LLC, Maharam under license

Complete product information at maharam.com

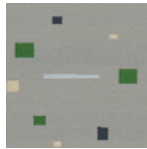
800.645.3943



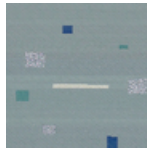
001 Magenta On
Ecu



002 Yellow On White



003 Emerald On
Gray



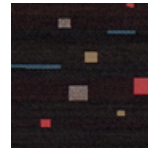
004 Ultramarine On
Gray Blue



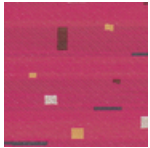
005 Turquoise On
Gray Blue Dark



006 Yellow Green On
Sepia



007 Crimson On
Black



008 Silver On
Magenta