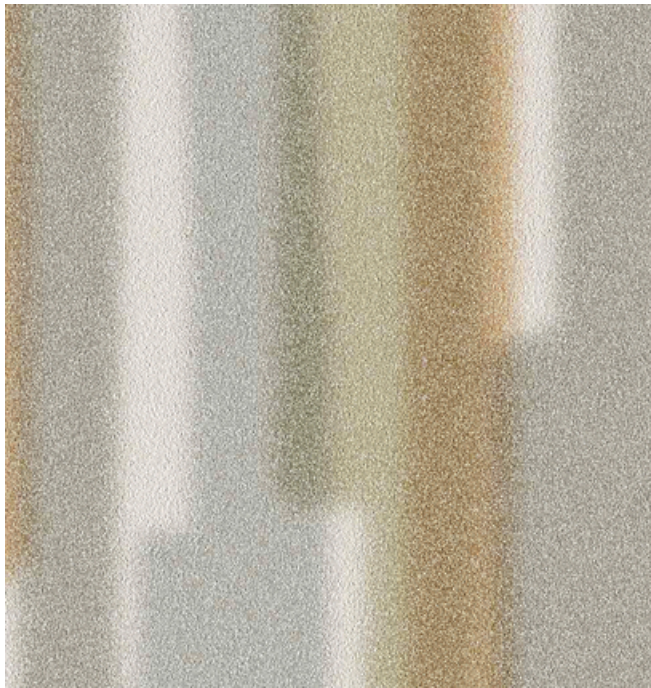
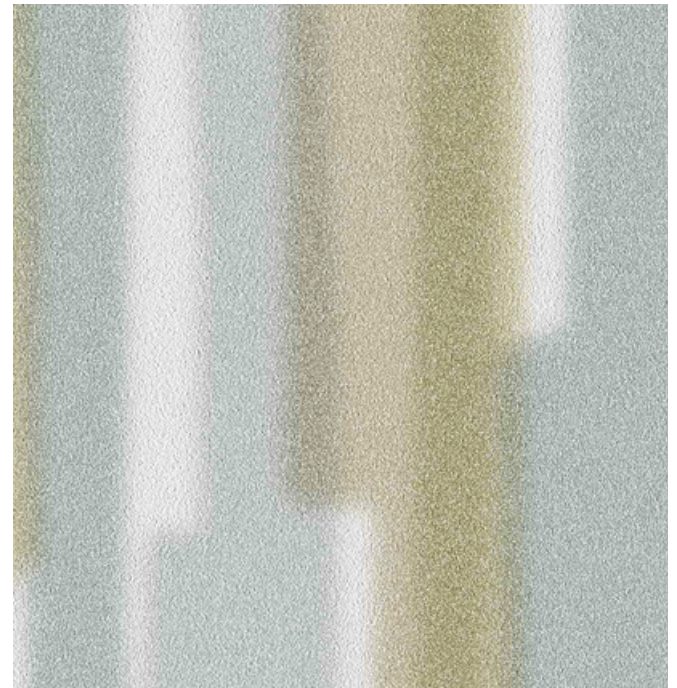


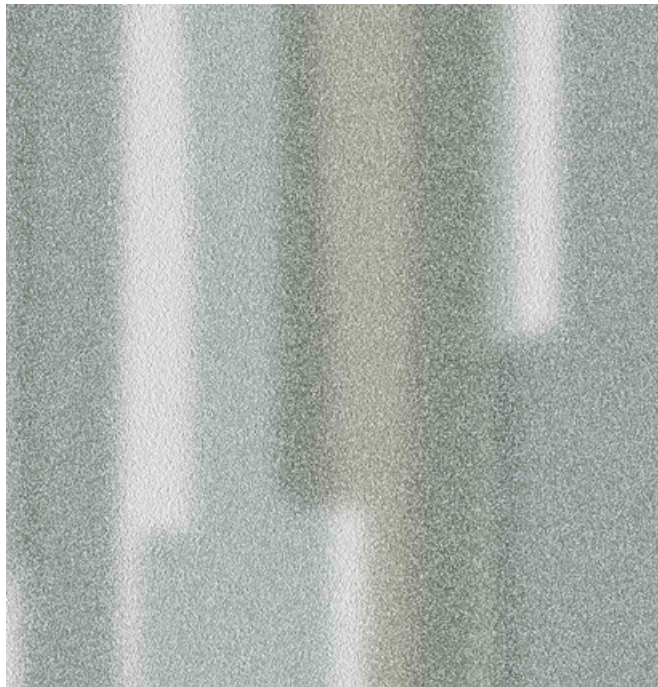
001 Robust



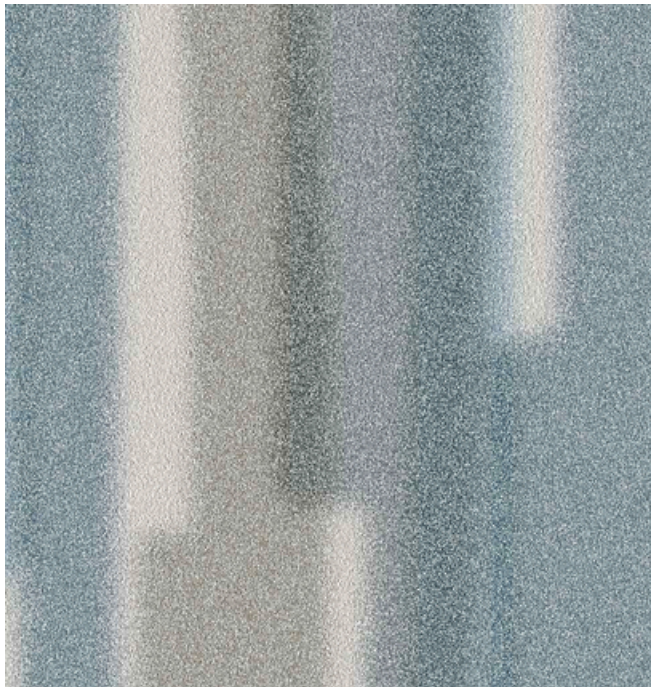
002 Lantern



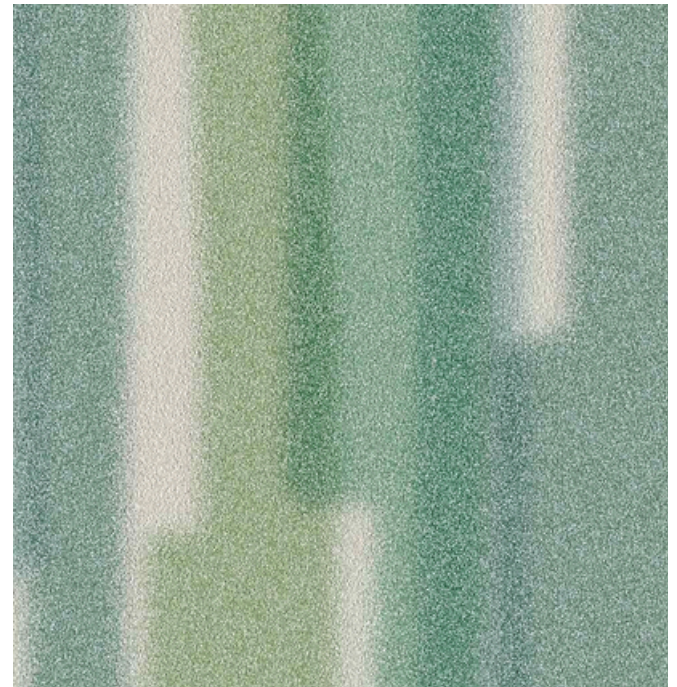
003 Scramble



004 Perch



005 Seafloor



006 Jungle

Application Walls	Price \$58.50 / C\$87.25 (FOB destination) C\$83.75 (FOB origin)	Maintenance W-Clean with water-based cleanser. ☒☒☒☒Ⓜ
Characteristics Content: 86% Thermoplastic Olefin, 14% Post-Industrial Recycled Glass Finish: PFAS-Free Protective Topcoat Backing: Polyester / Cellulose Width: 50" (127cm) Repeat: 60" V, 50" H (152cm V, 127cm H) Bolt Size: 35 yards (32 m) Weight: 18 oz/ly (600 gr/lm) Traffic: High Traffic Country of Origin: USA Note on Mold: Intended for use in buildings designed and maintained to avoid moisture on or within walls. Application must conform to current Installation Guidelines included in each shipment or available at maharam.com.	Testing Flammability: ASTM E84 Adhered CAN ULC S102 Adhered Lightfastness: AATCC 16.3, 200+ hours ☒☀️🔥🍷☒	Environmental Greenguard Gold Certified Healthier Hospitals Compliant Contains Recycled Content FR Free Free of Intentionally Added PFAS Made In USA Warranty 10 years. See Terms and Conditions for more information. © 2024 Knoll, Inc. Last updated August 1, 2025