

Specifications

Knoll Textiles

Facet

466804

Application

Seating, Upholstered Walls

Note: This textile is available as a made-to-order pillow.

Characteristics

Content: 77% Post-Consumer Recycled Polyester, 23% Polyester

Finish: None

Backing: None

Width: 54" (137cm)

Repeat: 1/4" V, 1/4" H

(1cm V, 1cm H)

Bolt Size: 34 yards (31 m)

Weight: 25.5 oz/ly (800 gr/lm)

Country of Origin: USA

Price

\$29.50 / C\$46.75 (FOB destination) / C\$42.25 (FOB origin)

Maintenance

W/S/B-Clean with water-based cleanser; mild, water-free dry cleaning solvent, or diluted household bleach.

Testing

Abrasion: ASTM D4157, 100,000 double rubs Wyzenbeek

Note: Abrasion test results exceeding ACT Performance Guidelines are not an indicator of product lifespan.

Multiple factors affect fabric durability and appearance retention.

Acoustics: ASTM C423, 1.00 NRC

Flammability: ASTM E84 Unadhered

BS 5852 Crib 5*

CAL 117-2013

NFPA 260

*passes with additional treatment

Lightfastness: AATCC 16.3, 40+ hours



Specifications

Facet

466804

Knoll Textiles

Environmental

Greenguard Gold Certified

GRS Certified Content

LBC Red List Free

Contains Recycled Content

FR Free

Free of Intentionally Added PFAS

Warranty

5 years.

© 2023 Knoll, Inc.

Complete product information at [knolltextiles.com](https://www.knolltextiles.com)

800.645.3943

Specifications

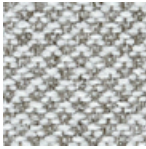
Facet

466804

Knoll Textiles



001 Quartz



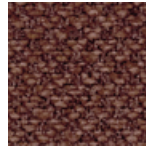
002 Mica



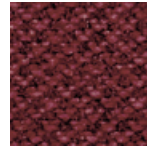
003 Fossil



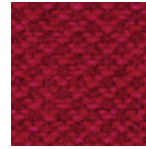
004 Stone



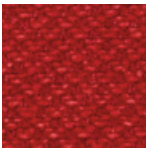
005 Clay



006 Vermillion



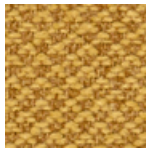
007 Crimson



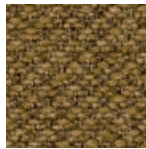
008 Fire



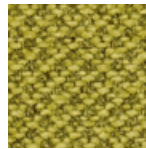
009 Tiger's Eye



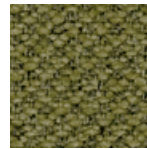
010 Gold



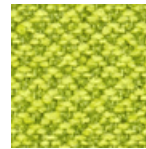
011 Earth



012 Lichen



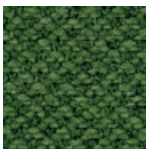
013 Verdant



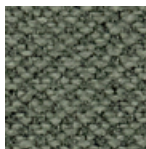
014 Zest



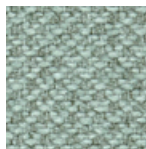
015 Foliage



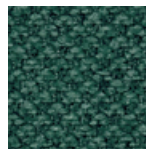
016 Emerald



017 Patina



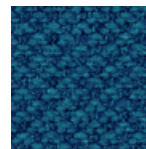
018 Celadon



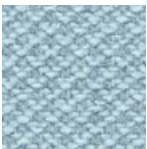
019 Juniper



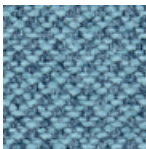
020 Tourmaline



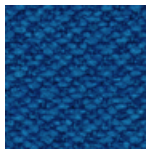
021 Lapis



022 Opal



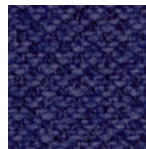
023 Aqua



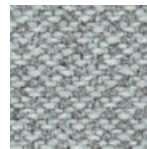
024 Cobalt



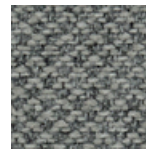
025 Marine



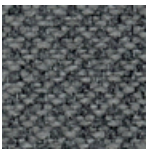
026 Amethyst



027 Graphite



028 Nickel



029 Meteorite



030 Lead