

Specifications

Factor

466629

maharam

Application

Seating

Note: This textile is available as a made-to-order pillow.

Characteristics

Content: 49% Post-Consumer Recycled Polyester, 28% Solution-Dyed Acrylic, 23% Solution-Dyed Nylon

Finish: None

Additional Finishes Available: Alta, Alta Food & Beverage, Nanotex, Nanotex with Impermeable Barrier, Stain Repellent Finish

Backing: Acrylic

Width: 53" (135cm)

Repeat: 1/2" V, 3/4" H

(1cm V, 2cm H)

Bolt Size: 30 yards (27 m)

Weight: 19.9 oz/ly (600 gr/lm)

Country of Origin: USA

Price

\$69.00 / C\$102.25 (FOB destination) / C\$98.75 (FOB origin)

Maintenance

W/S/B-Clean with water-based cleanser; mild, water-free dry cleaning solvent, or diluted household bleach.

☒ △ ☒ ☒ Ⓜ

Testing

Abrasion: ASTM D4157, 100,000 Double Rubs

Flammability: BS 5852 Crib 5*

CAL 117-2013

EN 1021-1*

EN 1021-2*

*passes with additional treatment

Lightfastness: AATCC 16.3, 40+ hours

☐ ☀ 🔥 💧 ☆

Environmental

Greenguard Gold Certified
LBC Red List Free
REACH Compliant
Contains Recycled Content
FR Free
Free of Intentionally Added PFAS

Warranty

5 years.

© 2023 Maharam

Complete product information at maharam.com
800.645.3943



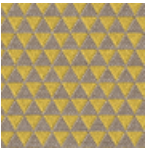
001 Thesbian



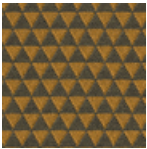
002 Toffee



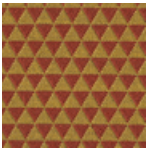
003 Empiric



004 Cockatoo



005 Masquerade



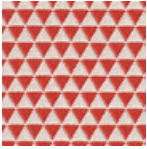
006 Regal



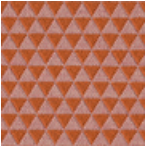
007 Absolute



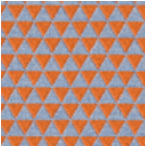
008 Rubus



009 Tayberry



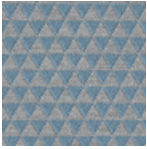
010 Present



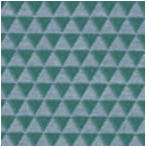
011 Seahorse



012 Windbound



013 Spirited



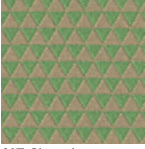
014 Earthly



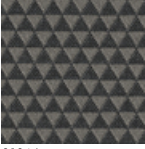
015 Yew



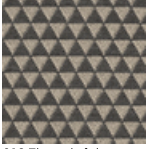
016 Cherish



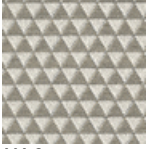
017 Chervil



018 Nocturne



019 Thoughtful



020 Commune