

Specifications  
Folio  
300104

**maharam**

**Application**

Walls

**Characteristics**

Content: 100% Non-Phthalate Vinyl  
Finish: PFAS-Free Protective Topcoat  
Backing: Polyester/Cotton Osnaburg  
Width: 54" (137cm)  
Repeat: Non-match  
Bolt Size: 30 yards (27 m)  
Class: Type II  
Weight: 20 oz/ly (600 gr/lm)  
Traffic: High Traffic  
Country of Origin: USA  
Note on Mold: Intended for use in buildings designed and maintained to avoid moisture on or within walls.  
Application must conform to current Installation Guidelines included in each shipment or available at maharam.com.

**Price**

\$31.00 / C\$48.00 (FOB destination) / C\$44.50 (FOB origin)

**Maintenance**

W/B-Clean with water-based cleanser or diluted household bleach.



**Testing**

Flammability: ASTM E84 Adhered  
BS 476 Adhered\*  
CAN ULC S102 Adhered  
EN 13501 Adhered  
GB 8624 Adhered\*  
\*passes with additional treatment

Lightfastness: AATCC 16.3, 200+ hours



Specifications

Folio

300104

**maharam**

**Environmental**

FR Free

Free of Intentionally Added PFAS

**Warranty**

10 years.

© 2023 Maharam

Complete product information at [maharam.com](https://maharam.com)

800.645.3943



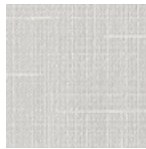
001 Mountaineer



002 Glacial



003 Cloudy



004 Iceward



005 Gentle



006 Shimmy



007 Cosine



008 Pour



009 Fortress



010 Gravitate



011 Crow



012 Darkroom



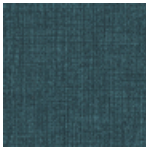
013 Ascendant



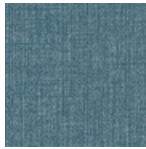
014 Psychic



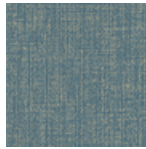
015 Energetic



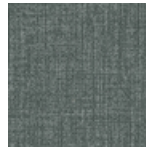
016 Peacock



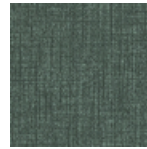
017 Rainforest



018 Soothe



019 Exalt



020 Constellation



021 Kiwi



022 Content



023 Granular



024 Equator



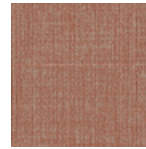
025 Fawn



026 Anima



027 Limbic



028 Cayenne



029 Ignite



030 Confection



031 Paradox



032 Pursue