



001 Dover



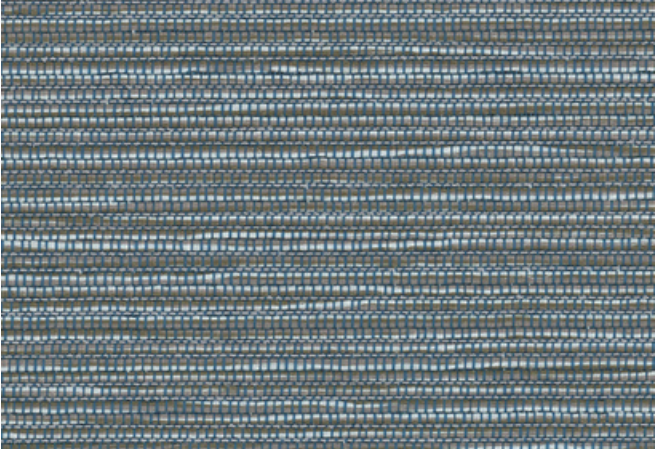
004 Flute



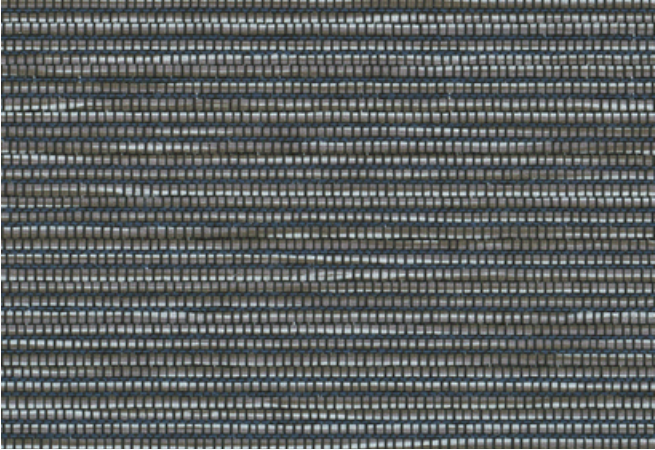
007 Marsh



002 Dune



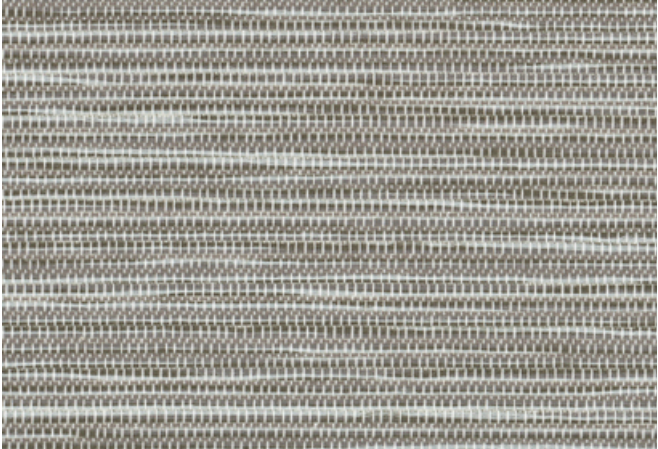
005 Ravine



008 Kettle




003 Cape



006 Flatron



<b>Application</b> Upholstered Walls, Walls	<b>Price</b> \$39.00 / C\$60.25 (FOB destination) C\$55.75 (FOB origin)	<b>Maintenance</b> W/B-Clean with water-based cleanser or diluted household bleach.
<b>Characteristics</b> Content: 53% Post-Consumer Recycled Polyester, 47% Polyester Finish: Stain Repellent Backing: Acrylic Width: 56" (142cm) Bolt Size: 40 yards (37 m) Weight: 16 oz/ly (500 gr/lm) Traffic: High Traffic Country of Origin: USA Note on Mold: Intended for use in buildings designed and maintained to avoid moisture on or within walls. Application must conform to current Installation Guidelines included in each shipment or available at maharam.com.	<b>Testing</b> Flammability: ASTM E84 Adhered  Lightfastness: AATCC 16.3, 40+ hours 	<b>Environmental</b> Greenguard Gold Certified GRS Certified Content Contains Recycled Content FR Free  <b>Warranty</b> 10 years. See Terms and Conditions for more information.  © 2020 Knoll, Inc.  Last updated May 1, 2025