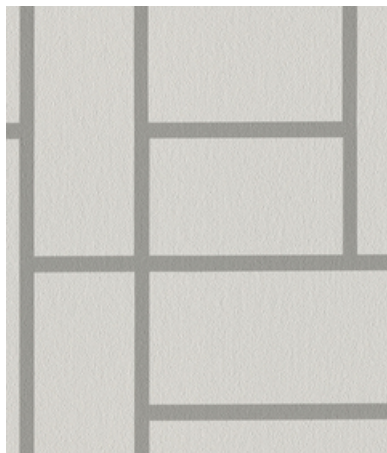




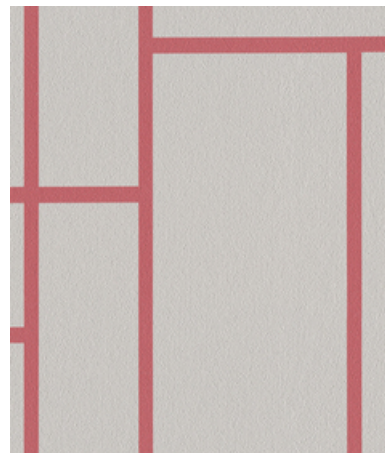
001 Rule



002 Inclement



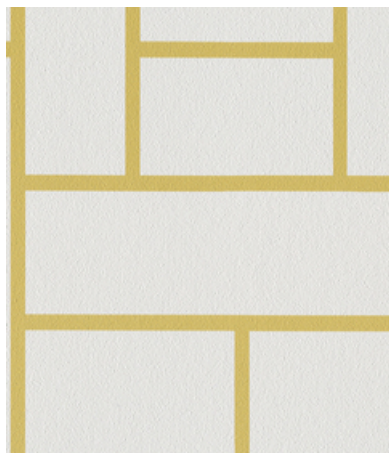
003 Shaker



004 Habanero



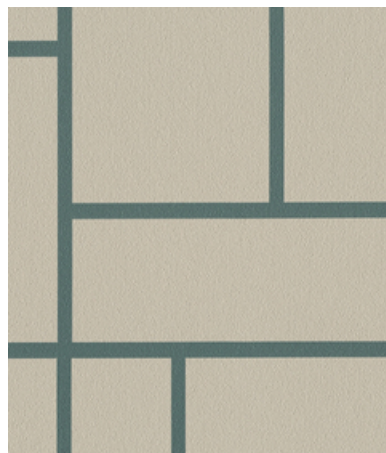
005 Peanut



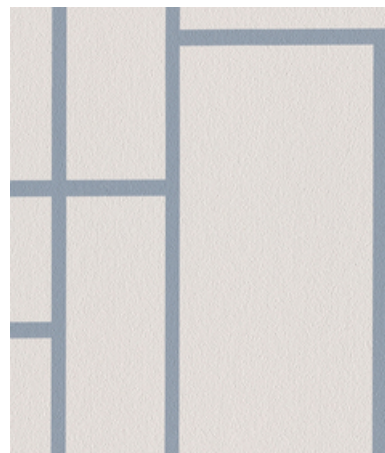
006 Goldfinch



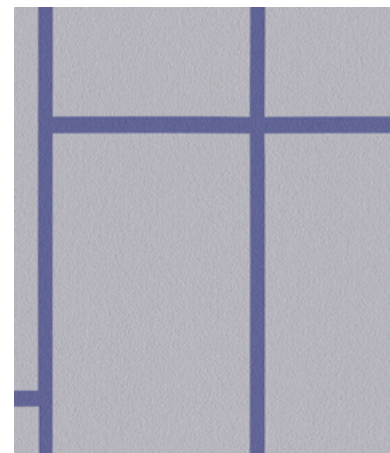
007 Fern



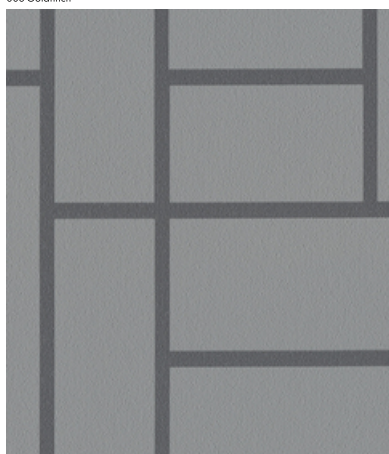
008 Voyage



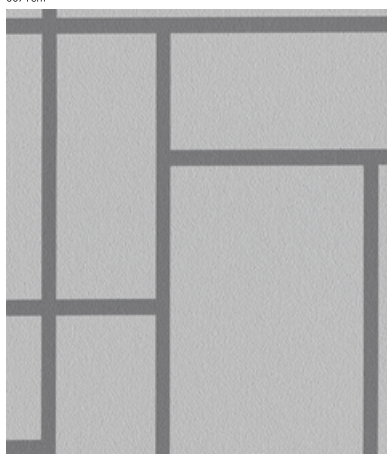
009 Cascade



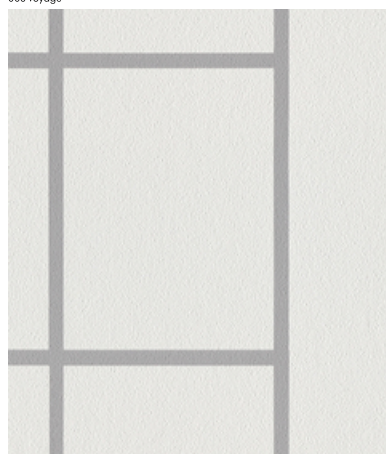
010 Diver



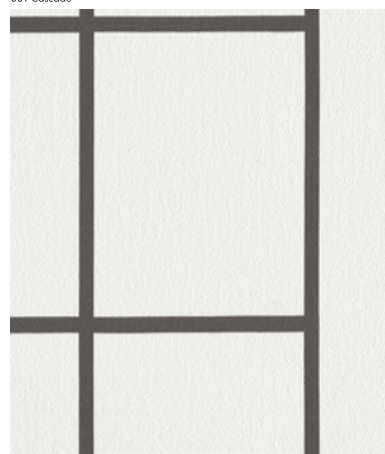
011 Heron



012 Flight



013 Altitude



014 Dice

Application

Walls

Characteristics


Content: 90% Thermoplastic Olefin, 10% Post-Industrial Recycled Glass
Finish: PFAS-Free Protective Topcoat
Backing: Polyester / Cellulose
Width: 52" (132cm)
Repeat: 18" V, 51 1/2" H (46cm V, 131cm H)
Bolt Size: 30 yards (27 m)
Weight: 18 oz/ly (600 gr/lm)
Traffic: High Traffic
Country of Origin: USA
Note on Mold: Intended for use in buildings designed and maintained to avoid moisture on or within walls.
Application must conform to current Installation Guidelines included in each shipment or available at maharam.com.

Price


\$31.00 / C\$48.00 (FOB destination)
C\$44.50 (FOB origin)

Testing

Flammability: ASTM E84 Adhered
CAN ULC S102 Adhered

Lightfastness: AATCC 16.3, 200+ hours


Maintenance

W-Clean with water-based cleanser.


Environmental

Greenguard Gold Certified
Healthier Hospitals Compliant
LBC Red List Free
Contains Recycled Content
FR Free
Free of Intentionally Added PFAS

Warranty

10 years. See Terms and Conditions for more information.

© 2024 Maharam

Last updated July 5, 2025