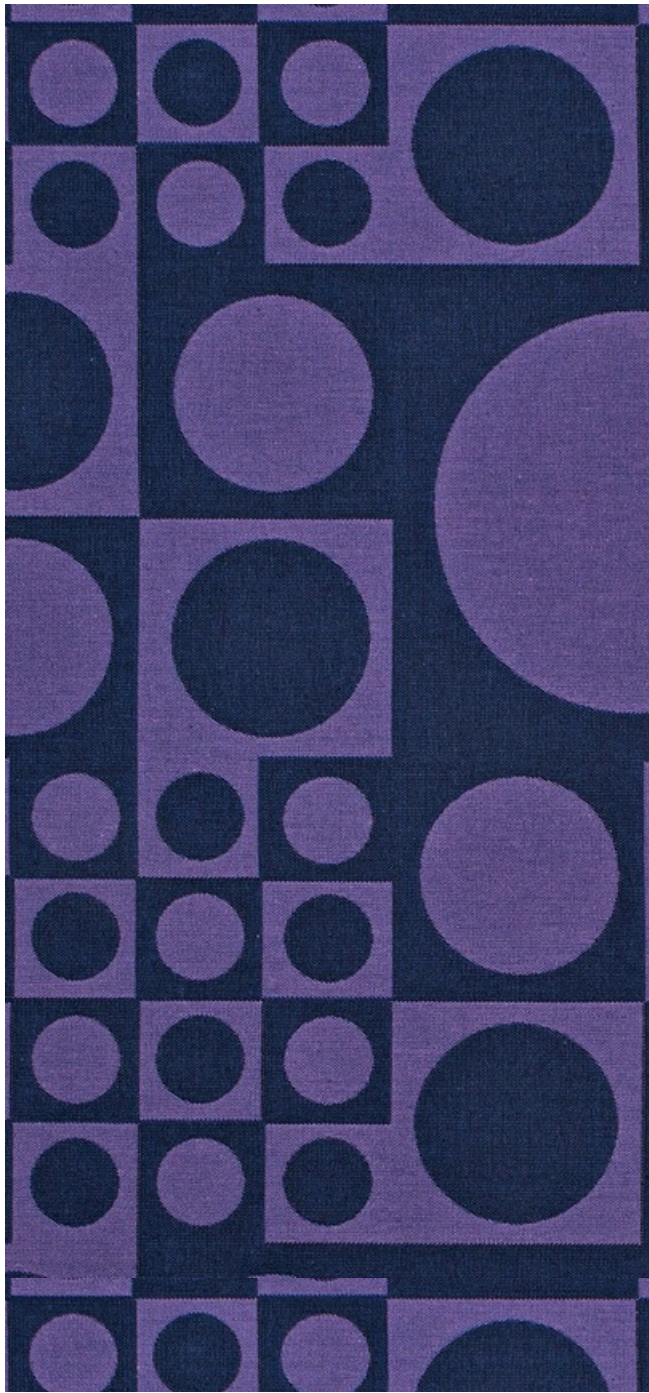


002 Red/Carmin



003 Lilac/Blue



004 White/Black

459970 Geometri by Verner Panton, 1960

**maharam**



## Design

Verner Panton, 1960

## Collection

Textiles of the 20th Century

## Application

Seating

Note: This textile is available as a made-to-order pillow.

## Characteristics

Content: 77% Cotton, 23% Polyester

Finish: Stain Repellent

Additional Finishes Available: Alta, Alta Food & Beverage, Antimicrobial Stain Resistant Finish with Impermeable Backing, Nanotex, Nanotex with Impermeable Barrier

Backing: None

Width: 55" (140cm)

Repeat: 26 1/2" V, 13" H  
(67cm V, 33cm H)

Bolt Size: 38 yards (35 m)

Weight: 21.8 oz/ly (700 gr/lm)

Country of Origin: Germany

## Price

\$161.00 / C\$233.50 (FOB destination)

C\$230.00 (FOB origin)

## Testing

Abrasion: ASTM D4157, 42,000 double rubs

Wyzenbeek

Note: Abrasion test results exceeding ACT

Performance Guidelines are not an indicator of product lifespan. Multiple factors affect fabric durability and appearance retention.

Flammability: AS/NZS 1530.3

AS/NZS 3837 Unadhered

CAL 117-2013

NFPA 260

Lightfastness: AATCC 16.3, 40+ hours



## Maintenance

S-Clean with mild, water-free dry cleaning solvent.



## Environmental

Greenguard Gold Certified

Oeko-Tex Certified

REACH Compliant

Contains Bio-Based Content

FR Free

## Warranty

3 years. See Terms and Conditions for more information.

© 2001 Verner Panton, Maharam under license

Last updated August 1, 2025