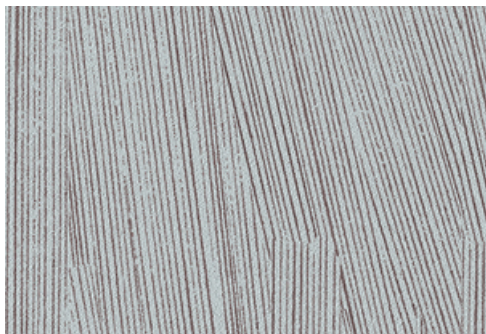
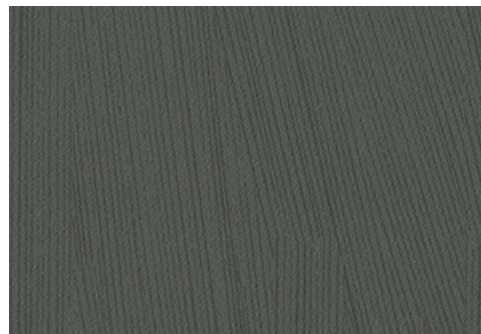


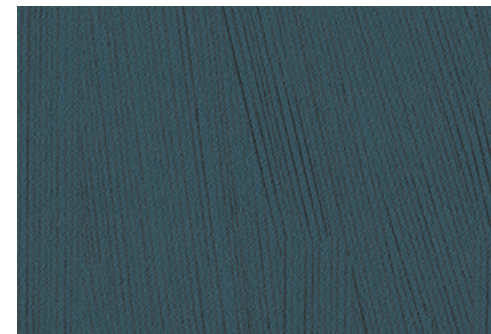
001 Bone



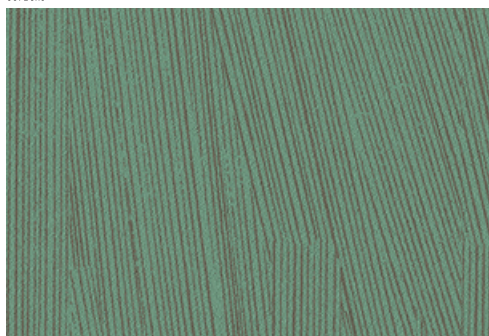
002 Noble



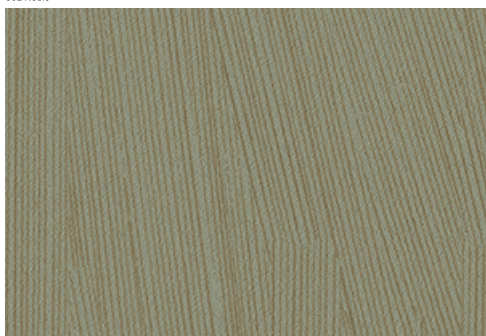
003 Silhouette



004 Bluefish



005 Oceanic



006 Willy



007 Rest



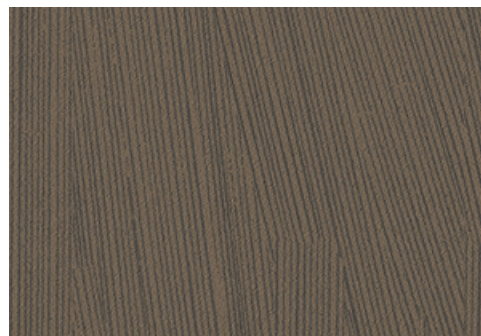
008 Absolute



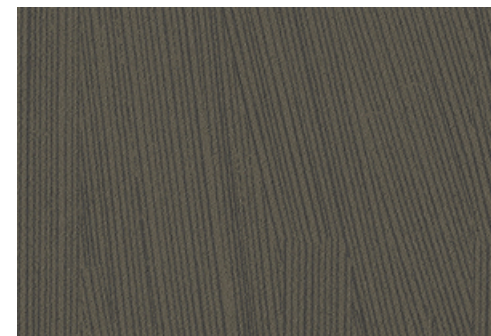
009 Beach



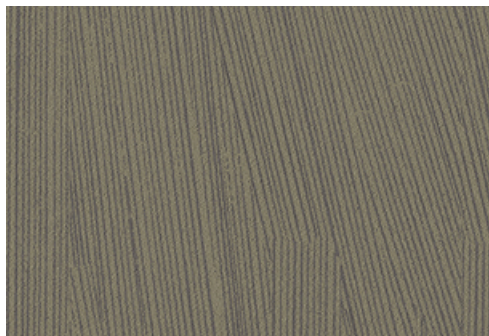
010 Lynx



011 Hazelnut



012 Espresso



013 Canoe



014 Pangolin



015 Enoki

Application Walls	Price \$36.00 / C\$54.25 (FOB destination) C\$50.75 (FOB origin)	Maintenance W-Clean with water-based cleanser. ☒☒☒☒Ⓜ
Characteristics Content: 76% Thermoplastic Olefin, 24% Post-Industrial Recycled Thermoplastic Olefin Finish: None Backing: Polyester/Cotton Osnaburg Width: 52" (132cm) Bolt Size: 30 yards (27 m) Weight: 20 oz/ly (600 gr/lm) Traffic: High Traffic Country of Origin: USA Note on Mold: Intended for use in buildings designed and maintained to avoid moisture on or within walls. Application must conform to current Installation Guidelines included in each shipment or available at maharam.com.	Testing Flammability: ASTM E84 Adhered CAN ULC S102 Adhered Lightfastness: AATCC 16.3, + hours ☒☀☛☛☛	Environmental Greenguard Gold Certified Healthier Hospitals Compliant LBC Red List Free REACH Compliant Contains Recycled Content FR Free Free of Intentionally Added PFAS Made In USA Warranty 10 years. See Terms and Conditions for more information.
		© 2024 Knoll, Inc.
		Last updated May 1, 2025