

## Specifications

### Guise

by Nick Cave

466727

#### Application

Seating

Note: This textile is available as a made-to-order pillow.

#### Characteristics

Content: 35% Polyester, 30% Wool, 20% Cotton, 13% Nylon, 2% Stainless Steel

Finish: None

Backing: None

Width: 54" (137cm)

Bolt Size: 27 yards (25 m)

Weight: 22 oz/ly (700 gr/lm)

Country of Origin: Italy

Note: Shown railroaded. Variations in color and texture are inherent to this textile.

#### Price

\$207.00 / C\$305.17 (FOB destination) / C\$295.75 (FOB origin)

#### Maintenance

S-Clean with mild, water-free dry cleaning solvent.

#### Testing

Abrasion: ASTM D4157, 60,000 double rubs Wyzenbeek

Note: Abrasion test results exceeding ACT Performance Guidelines are not an indicator of product lifespan.

Multiple factors affect fabric durability and appearance retention.

Flammability: BS 5852 Crib 5\*

CAL 117-2013

NFPA 260

\*passes with additional treatment

Lightfastness: AATCC 16.3, 40+ hours



# Specifications

Knoll Textiles

Guise

by Nick Cave

466727

## Environmental

Greenguard Gold Certified

LBC Red List Free

Contains Bio-Based Content

FR Free

Free of Intentionally Added PFAS

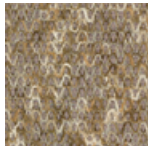
## Warranty

3 years.

© 2022 Knoll, Inc.

Complete product information at [knolltextiles.com](https://knolltextiles.com)

800.645.3943



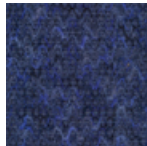
001 Champagne



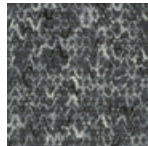
002 Rose



003 Greenhouse



004 Indigo



005 Flint