

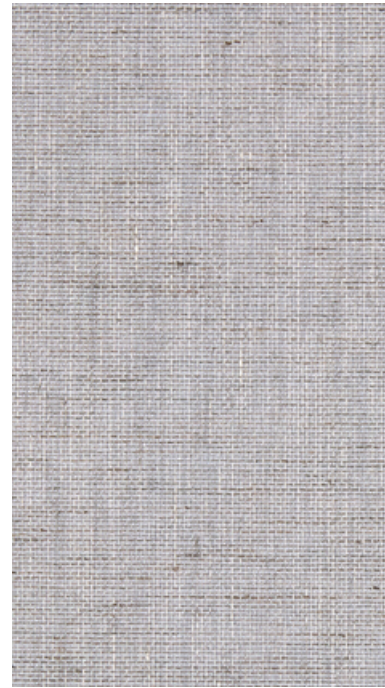
001 Cambric



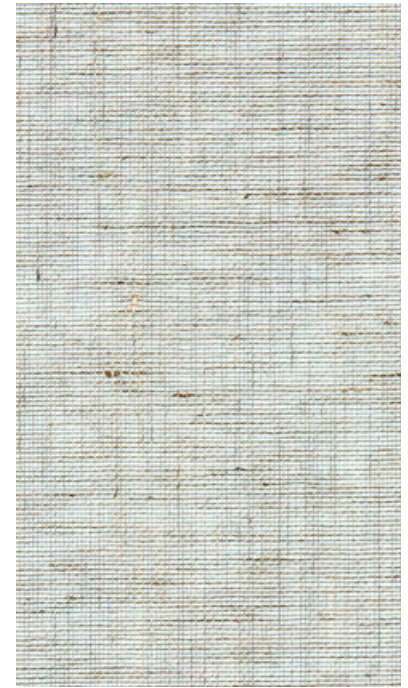
002 Aperture



003 Anchor



004 Starry



005 Devote



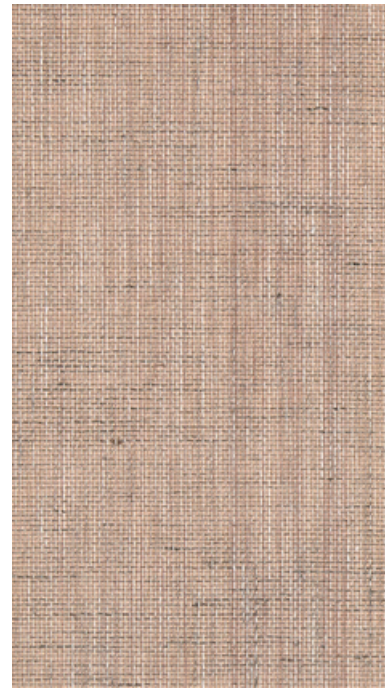
006 Thyme



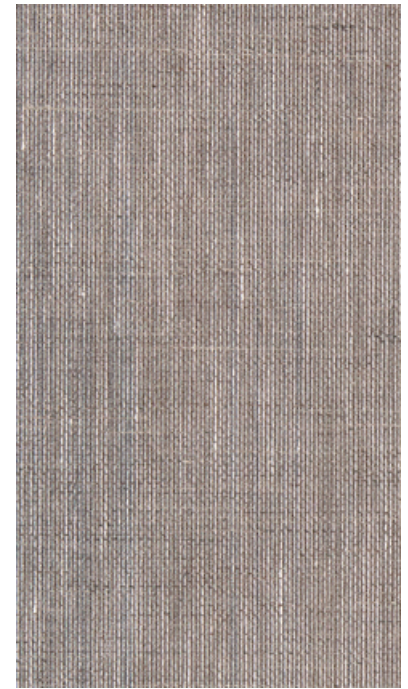
007 Collier



008 Scion



009 Safflower



010 Porter

300071 Hatch

**maharam**

## Application

Walls

## Characteristics

Content: 100% Linen

Finish: Stain Repellent

Backing: 60% Post-Consumer Recycled Paper, 40% Paper

Width: 36" (91cm)

Bolt Size: 50 yards (46 m)

Weight: 6.9 oz/ly (200 gr/lm)

Traffic: Low Traffic

Country of Origin: Japan

Note: Variations in color and texture are inherent to this textile.

Note on Mold: Intended for use in buildings designed and maintained to avoid moisture on or within walls.

Application must conform to current Installation

Guidelines included in each shipment or available at maharam.com.

## Price

\$71.00 / C\$111.08 (FOB destination)

C\$101.50 (FOB origin)

## Testing

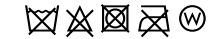
Flammability: ASTM E84 Adhered

Lightfastness: AATCC 16.3, 40+ hours



## Maintenance

W-Clean with water-based cleanser.



## Environmental

Greenguard Gold Certified

LBC Red List Free

REACH Compliant

Contains Bio-Based Content

FR Free

## Warranty

1 year. See Terms and Conditions for more information.

© 2021 Maharam

Last updated May 1, 2025