

Specifications

Hearth

466536

maharam

Application

Seating

Note: This textile is available as a made-to-order pillow.

Characteristics

Content: 32% Wool, 31% Acrylic, 30% Cotton, 7% Polyester

Finish: None

Additional Finishes Available: Alta, Alta Food & Beverage, Nanotex, Nanotex with Impermeable Barrier, Stain Repellent Finish

Backing: None

Width: 52" (132cm)

Bolt Size: 22 yards (20 m)

Weight: 29.6 oz/ly (900 gr/lm)

Country of Origin: Belgium

Price

\$103.00 / C\$150.75 (FOB destination) / C\$147.25 (FOB origin)

Maintenance

S-Clean with mild, water-free dry cleaning solvent.

☒ ☒ ☒ ☒ Ⓟ

Testing

Abrasion: ASTM D4157, 80,000 double rubs Wyzenbeek

ASTM D4966, 60,000 cycles Martindale

Note: Abrasion test results exceeding ACT Performance Guidelines are not an indicator of product lifespan.

Multiple factors affect fabric durability and appearance retention.

Flammability: AS/NZS 3837 Unadhered

BS 5852 - PART 1*

BS 5852 Crib 5*

CAL 117-2013

EN 1021-1*

EN 1021-2*

ISO 5660 Unadhered

*passes with additional treatment

Lightfastness: AATCC 16.3, 40+ hours

☐ ☀ 🔥 💧 ☆

Specifications

Hearth

466536

maharam

Environmental

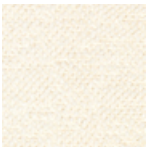
Greenguard Gold Certified
Healthier Hospitals Compliant
LBC Red List Free
REACH Compliant
Contains Bio-Based Content
FR Free
Free of Intentionally Added PFAS

Warranty

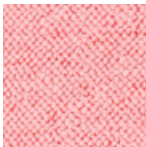
3 years.

© 2020 Maharam

Complete product information at maharam.com
800.645.3943



001 Wedding



002 Sherbet



003 Regnant



004 Coffeehouse



005 Goldfish



006 Stardust



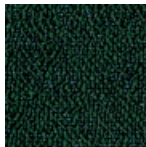
007 Amphitheater



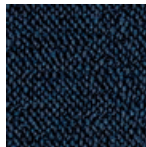
008 Gingersnap



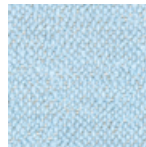
009 Downfield



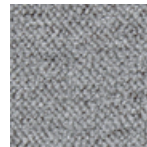
010 Subtropical



011 Undersea



012 Kite



013 Mystical



014 Moonlet



015 Bonobo