

Specifications
Illude
399912

maharam

Application

Walls

Characteristics

Content: 100% Non-Phthalate Vinyl
Finish: None
Backing: Polyester/Cotton Osnaburg
Width: 54" (137cm)
Repeat: Non-match
Bolt Size: 30 yards (27 m)
Class: Type II
Weight: 20 oz/ly (600 gr/lm)
Traffic: High Traffic
Country of Origin: USA
Note on Mold: Intended for use in buildings designed and maintained to avoid moisture on or within walls.
Application must conform to current Installation Guidelines included in each shipment or available at maharam.com.

Price

\$41.00 / C\$62.25 (FOB destination) / C\$58.75 (FOB origin)

Maintenance

W/B-Clean with water-based cleanser or diluted household bleach.



Testing

Flammability: ASTM E84 Adhered
BS 476 Adhered*
CAN ULC S102 Adhered
EN 13501 Adhered*
GB 8624 Adhered*
*passes with additional treatment

Lightfastness: AATCC 16.3, 200+ hours



Specifications
Illude
399912

maharam

Environmental

FR Free
Free of Intentionally Added PFAS
Non-Phthalate Vinyl

Warranty

10 years.

© 2016 Maharam

Complete product information at maharam.com
800.645.3943



004 Brassica



006 Spindle



007 Fleece



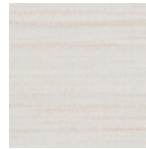
008 Raw



009 Bark



010 Buff



011 Marble



012 Slope



013 Cement



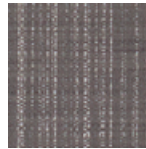
014 Dove



015 Pelt



016 Mine



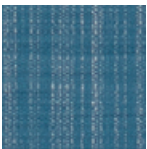
017 Carbon



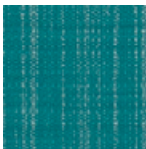
018 Space



019 Loyal



020 Jib



021 Plumage



022 Glide



023 Frost



024 Sprout