

## Specifications

Imbue

466375

**maharam**

### Application

Seating

Note: This textile is intended for residential use. This textile is available as a made-to-order pillow.

### Characteristics

Content: 70% Rayon, 30% Polyester

Finish: None

Additional Finishes Available: Alta, Alta Food & Beverage, Nanotex, Nanotex with Impermeable Barrier, Stain Repellent Finish

Backing: None

Width: 53" (135cm)

Bolt Size: 28 yards (26 m)

Weight: 17.7 oz/ly (500 gr/lm)

Country of Origin: USA

### Price

\$128.00 / C\$186.50 (FOB destination) / C\$183.00 (FOB origin)

### Maintenance

S-Clean with mild, water-free dry cleaning solvent.

☒ ☒ ☒ ☒ ☐

### Testing

Abrasion: ASTM D4157, 100,000 double rubs Wyzenbeek

Note: Abrasion test results exceeding ACT Performance Guidelines are not an indicator of product lifespan.

Multiple factors affect fabric durability and appearance retention.

Flammability: CAL 117-2013

Lightfastness: AATCC 16.3, 40+ hours

A ☀ 🔥 💧 ☆

Specifications

Imbue  
466375

**maharam**

**Environmental**

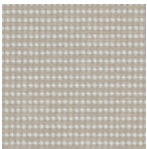
Greenguard Gold Certified  
Greenguard Certified  
Healthier Hospitals Compliant  
LBC Red List Free  
REACH Compliant  
FR Free  
Free of Intentionally Added PFAS

**Warranty**

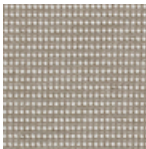
None:  
3 years: Indoor Seating.

© 2017 Maharam

Complete product information at [maharam.com](http://maharam.com)  
800.645.3943



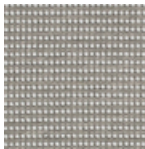
001 Soft



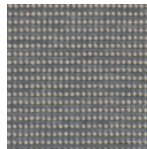
002 Horn



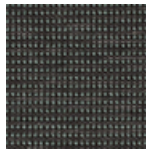
003 Bolt



004 Silverado



005 Form



006 Wise



007 Dark



008 Cobbler