

Specifications

Inlay

by Hella Jongerius

466353

Application

Seating

Note: This textile is available as a made-to-order pillow.

Characteristics

Content: 80% Cotton, 20% Solution-Dyed Nylon

Finish: Stain Repellent

Additional Finishes Available: Alta, Alta Food & Beverage, Nanotex, Nanotex with Impermeable Barrier

Backing: Acrylic

Width: 52" (132cm)

Repeat: 8" V, 27 1/4" H

(20cm V, 69cm H)

Bolt Size: 30 yards (27 m)

Weight: 19.3 oz/ly (600 gr/lm)

Country of Origin: USA

Price

\$135.00 / C\$196.50 (FOB destination) / C\$193.00 (FOB origin)

Maintenance

S-Clean with mild, water-free dry cleaning solvent.

☒ ☒ ☒ ☒ ☒ Ⓟ

Testing

Abrasion: ASTM D4157, 100,000 double rubs Wyzenbeek

Note: Abrasion test results exceeding ACT Performance Guidelines are not an indicator of product lifespan.

Multiple factors affect fabric durability and appearance retention.

Flammability: BS 5852 Crib 5*

CAL 117-2013

EN 1021-1*

EN 1021-2*

*passes with additional treatment

Lightfastness: AATCC 16.3, 40+ hours

☐ ☀ ☕ ☪ ☼

Specifications

Inlay

by Hella Jongerius

466353

Environmental

Greenguard Gold Certified

Contains Bio-Based Content

FR Free

Warranty

3 years.

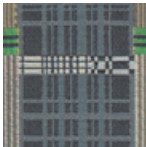
© 2016 Maharam

Complete product information at maharam.com

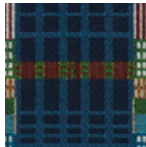
800.645.3943



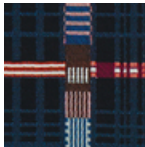
001 Shell



002 Eucalyptus



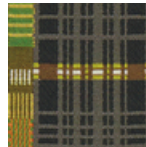
003 Wood



004 Indigo



005 Cacao



006 Fern