

Specifications

Instant Photo

300060

maharam

Application

Walls

Characteristics

Content: 65% Cellulose, 35% Latex

Finish: PFAS-Free Protective Topcoat

Backing: None

Reference Dimension: 10' H x 16' 8" W (305cm x 508cm)

Traffic: Moderate Traffic

Customs: Repeatable, Scalable

Country of Origin: USA

Note: Colors depicted are not an exact representation of the final product. Please request a substrate sample for accurate quality and color reference.

Note on Mold: Intended for use in buildings designed and maintained to avoid moisture on or within walls.

Application must conform to current Installation Guidelines included in each shipment or available at maharam.com.

Price

Installation is sized, priced and produced on a project-specific basis.

Maintenance

W-Clean with water-based cleanser.



Testing

Flammability: CAN ULC S102 Adhered



Specifications
Instant Photo
300060

maharam

Environmental

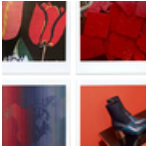
Greenguard Gold Certified
LBC Red List Free
Contains Bio-Based Content
FR Free
Free of Intentionally Added PFAS

Warranty

3 years.

© 2019 Paul Smith, Maharam under license

Complete product information at maharam.com
800.645.3943



001