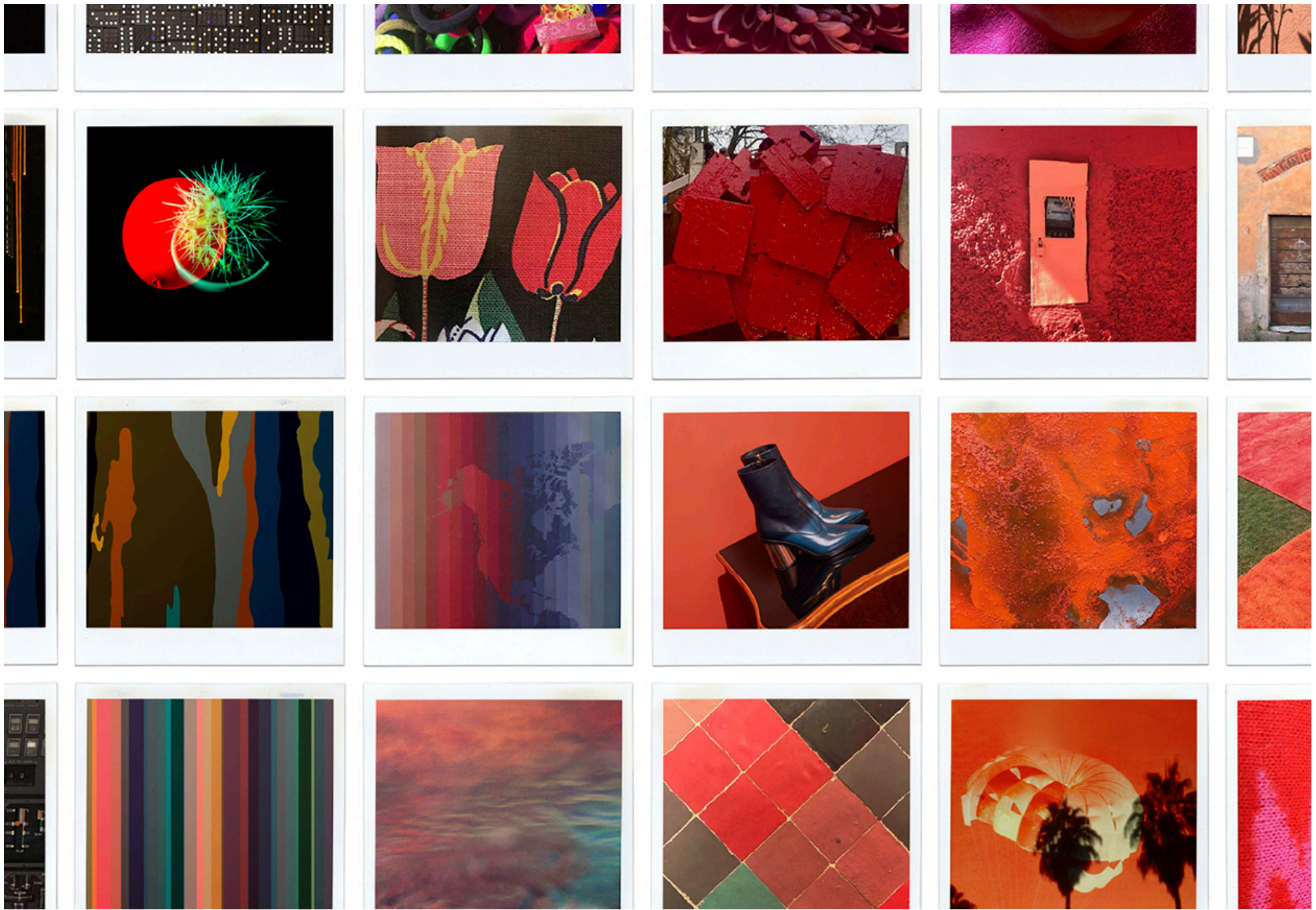




300060 Instant Photo

maharam



001

Design

Paul Smith

Application

Walls

Characteristics

Content: 65% Cellulose, 35% Latex

Finish: PFAS-Free Protective Topcoat

Backing: None

Reference Dimension: 10' H x 16' 8" W (305cm x 508cm)

Traffic: Moderate Traffic

Customs: Repeatable, Scalable

Country of Origin: USA

Note: Colors depicted are not an exact representation of the final product. Please request a substrate sample for accurate quality and color reference.

Note on Mold: Intended for use in buildings designed and maintained to avoid moisture on or within walls.

Application must conform to current Installation Guidelines included in each shipment or available at maharam.com.

Price

Installation is sized, priced and produced on a project-specific basis.

Maintenance

W-Clean with water-based cleanser.



Testing

Flammability: CAN ULC S102 Adhered



Environmental

Greenguard Gold Certified

LBC Red List Free

Contains Bio-Based Content

FR Free

Free of Intentionally Added PFAS

Brief

Depicting over 600 images from Paul Smith's personal collection of photographs, Instant Photo features an array of objects, environments, and surfaces that speaks to Smith's passion for collecting while commenting on the relevance of instant photography in today's hyper-documented world.

Warranty

3 years. See Terms and Conditions for more information.

© 2019 Paul Smith, Maharam under license

Last updated August 3, 2025