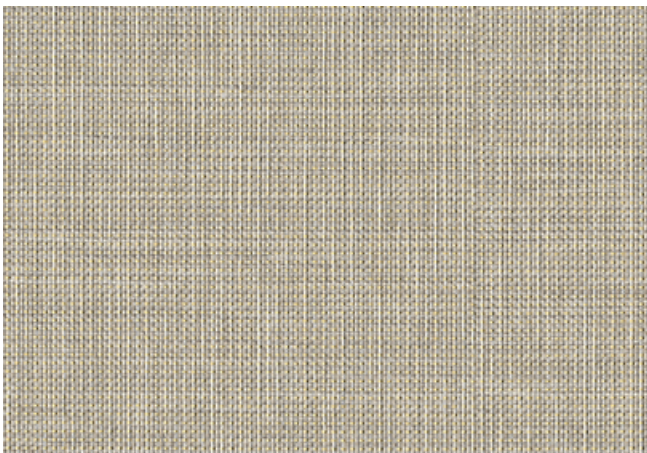
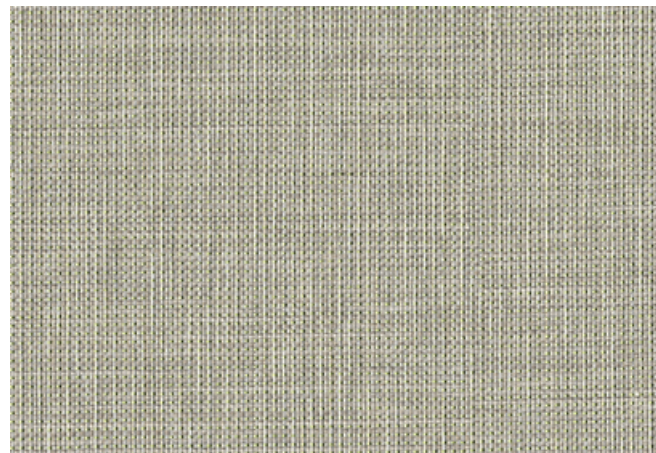


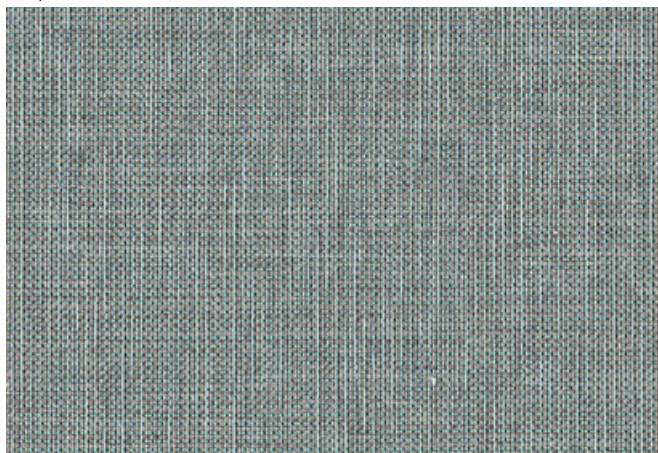
001 Easy



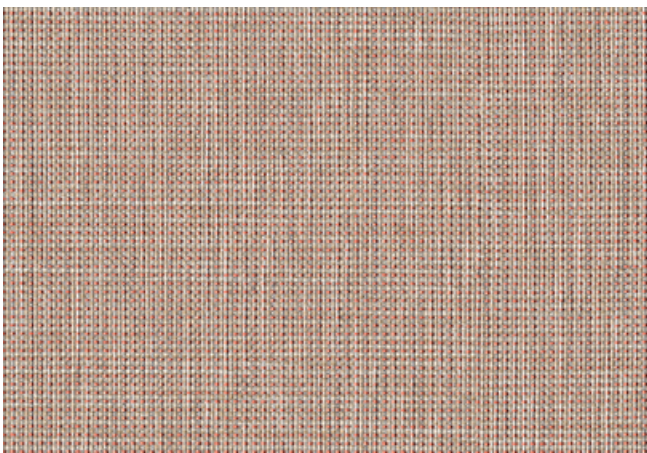
002 Field



003 Spruce



004 Lagoon



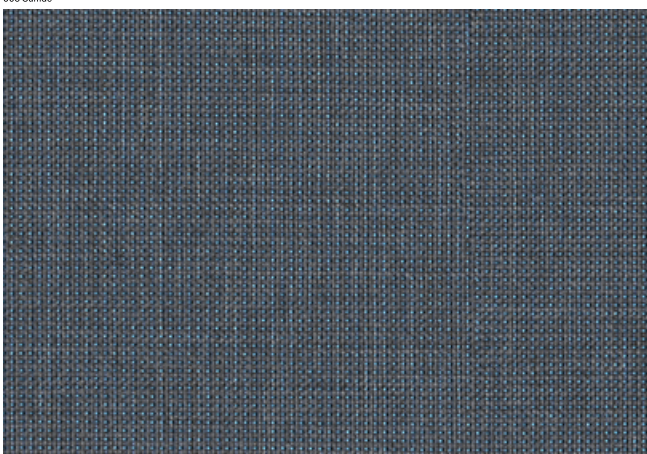
005 Sumac



006 Outward



007 Stormy



008 Royal



<b>Application</b> Walls	<b>Price</b> \$30.50 / C\$47.25 (FOB destination) C\$43.75 (FOB origin)	<b>Maintenance</b> W/B-Clean with water-based cleanser or diluted household bleach.
<b>Characteristics</b> Content: 87% Solution-Dyed Polyolefin, 13% Post-Consumer Recycled Polyester Finish: None Backing: Acrylic Width: 55" (140cm) Bolt Size: 40 yards (37 m) Weight: 13.5 oz/ly (400 gr/lm) Traffic: High Traffic Country of Origin: USA Note on Mold: Intended for use in buildings designed and maintained to avoid moisture on or within walls. Application must conform to current Installation Guidelines included in each shipment or available at maharam.com.	<b>Testing</b> Acoustics: ASTM C423, 0.75 NRC  Flammability: ASTM E84 Adhered ASTM E84 Unadhered CAN ULC S102 Adhered CAN ULC S102 Unadhered EN 13501 Adhered* *passes with additional treatment  Lightfastness: AATCC 16.3, 40+ hours ☀️🔥👉🌟	<b>Environmental</b> Greenguard Gold Certified LBC Red List Free Contains Recycled Content FR Free Free of Intentionally Added PFAS  <b>Warranty</b> 10 years. See Terms and Conditions for more information.  © 2024 Knoll, Inc.  Last updated August 18, 2025