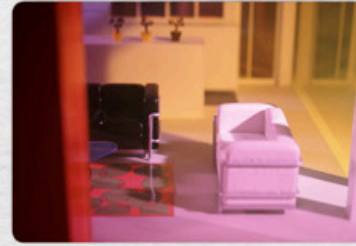


399464 Kaleidoscope House (Large)



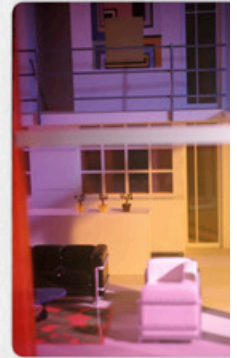
13



20



13



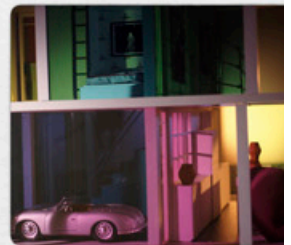
29



5



30



5

**Design**

Laurie Simmons

**Application**

Walls

**Characteristics**

Content: 65% Cellulose, 35% Latex

Finish: PFAS-Free Protective Topcoat

Backing: None

Reference Dimension: 10' H x 16' 8" W (305cm x 508cm)

Traffic: Moderate Traffic

Customs: Repeatable

Country of Origin: USA

Note: Colors depicted are not an exact representation of the final product. Please request a substrate sample for accurate quality and color reference.

Note on Mold: Intended for use in buildings designed and maintained to avoid moisture on or within walls.

Application must conform to current Installation Guidelines included in each shipment or available at maharam.com.

**Price**

Installation is sized, priced and produced on a project-specific basis.

**Maintenance**

W-Clean with water-based cleanser.



**Testing**

Flammability: AS/NZS 3837 Adhered

ASTM E84 Adhered

CAN ULC S102 Adhered

ISO 5660 Adhered

Lightfastness: AATCC 16.3, 40+ hours



**Environmental**

Greenguard Gold Certified

LBC Red List Free

Contains Bio-Based Content

FR Free

Free of Intentionally Added PFAS

**Brief**

Kaleidoscope House (Large) explores depictions of childhood fantasies and domesticity through hundreds of slides of interiors from a modernist dollhouse designed in 2000 by artist Laurie Simmons and architect Peter Wheelwright.

**Warranty**

3 years. See Terms and Conditions for more information.

© 2010 Laurie Simmons, Maharam under license

Last updated August 3, 2025