

Specifications

Knoll Velvet, 1970

466780

Application

Seating

Windows require additional finishes.

Note: This textile is available as a made-to-order pillow.

Characteristics

Content: 100% Mohair

Finish: None

Backing: Cotton

Width: 54" (137cm)

Bolt Size: 26 yards (24 m)

Weight: 26 oz/ly (800 gr/lm)

Country of Origin: Netherlands

Price

\$250.00 / C\$360.75 (FOB destination) / C\$357.25 (FOB origin)

Maintenance

X-Vacuum or brush lightly to remove surface dust.

Testing

Abrasion: ASTM D4157, 70,000 double rubs Wyzenbeek

Note: Abrasion test results exceeding ACT Performance Guidelines are not an indicator of product lifespan.

Multiple factors affect fabric durability and appearance retention.

Acoustics: ASTM C423, 0.00 NRC 0.60

Flammability: BS 5852 Crib 5

NFPA 260

NFPA 701*

*passes with additional treatment

Lightfastness: AATCC 16.3, 40+ hours



Specifications
Knoll Velvet, 1970
466780

Knoll Textiles

Environmental

Cradle To Cradle Basic Certified

Greenguard Gold Certified

LBC Red List Free

REACH Compliant

Contains Bio-Based Content

FR Free

Free of Intentionally Added PFAS

Warranty

3 years.

© 1980 Knoll Inc.

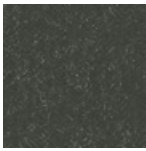
Complete product information at [knolltextiles.com](https://www.knolltextiles.com)
800.645.3943

Specifications
Knoll Velvet, 1970
466780

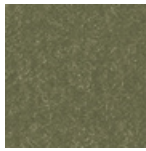
Knoll Textiles



034 Wine



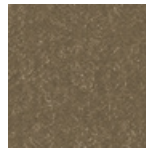
048 Graphite



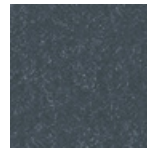
049 Sage



060 Sandstone



062 Clove



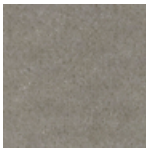
063 Marina



066 Ebony



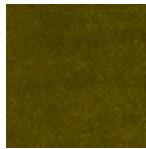
070 Palomino



071 Silver



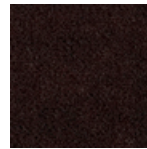
072 Celadon



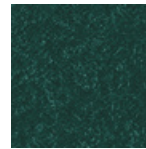
074 Moss



076 Tomato



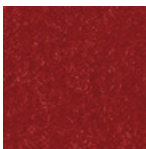
079 Espresso



081 Teal



082 Currant



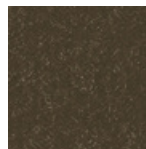
083 Bayberry



084 Aviator



085 Penny



086 Truffle



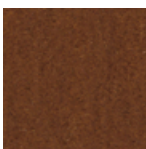
087 Swan



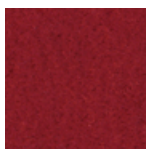
088 Ethereal



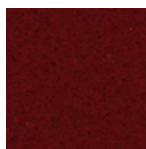
089 Amarillo



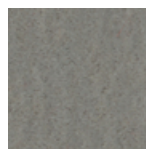
090 Cloister



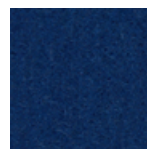
091 Inferno



092 Flamenco



093 Cirrus



094 Macaw



095 Orbit



096 Ultraviolet