

# Specifications

## Leather Tiles

### 700146

**Application**

Floors, Walls

**Characteristics**

Content: 100% Leather

Finish: Protective Topcoat

Backing: None

Dye Method: Transparent Dye

Weight: 8.5 oz/sf (2600 gr/sm)

Hide Size: 0-0 square feet (- square meters)

Hide Thickness: 3.0-3.5 millimeters

Hide Origin: Europe

Country of Origin: Italy

Note: This material exhibits natural markings and inherent color and textural variations.

Note on Mold: Intended for use in buildings designed and maintained to avoid moisture on or within walls.

Application must conform to current Installation Guidelines included in each shipment or available at [maharam.com](http://maharam.com).

**Price**

Contact your sales representative for pricing.

**Available Sizes****Square**

4", 6", 8", 9", 12", 16", 18"

**Rectangle**

2" x 8", 2" x 12", 4" x 8", 4" x 12", 8" x 16", 9" x 18", 12" x 18"

**Parallelogram**

2.75" x 8"

**Maintenance**

Professional cleaning recommended.

**Testing**

Note: This material will lighten with prolonged exposure to heat or sunlight.

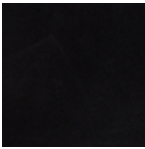
Specifications  
Leather Tiles  
700146

Warranty

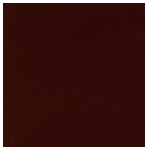
None.

© 2022 Edelman

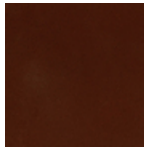
Complete product information at [maharam.com](https://maharam.com)  
800.645.3943



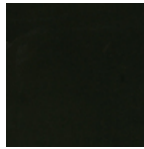
002 Black



003 Dark Red



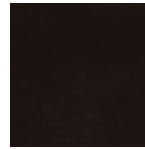
004 Dark Brown



005 Dark Green



006 Rust



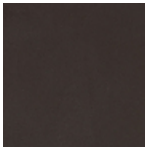
012 Pitch Brown



013 Very Natural



025 Ivory



031 Grey Slate



033 Rich Blue