

Specifications

Loyal

300103

maharam

Application

Walls

Characteristics

Content: 100% Non-Phthalate Vinyl

Finish: PFAS-Free Protective Topcoat

Backing: Polyester/Cotton Osnaburg

Width: 54" (137cm)

Repeat: Non-match

Bolt Size: 30 yards (27 m)

Class: Type II

Weight: 20 oz/ly (600 gr/lm)

Traffic: High Traffic

Country of Origin: USA

Note on Mold: Intended for use in buildings designed and maintained to avoid moisture on or within walls.

Application must conform to current Installation Guidelines included in each shipment or available at maharam.com.

Price

\$33.00 / C\$50.75 (FOB destination) / C\$47.25 (FOB origin)

Maintenance

W/B-Clean with water-based cleanser or diluted household bleach.

☒ △ ☒ ☒ Ⓜ

Testing

Flammability: ASTM E84 Adhered

BS 476 Adhered*

CAN ULC S102 Adhered

EN 13501 Adhered

GB 8624 Adhered*

*passes with additional treatment

Lightfastness: AATCC 16.3, 200+ hours

☀ 🔥 🖨

Environmental

FR Free
Free of Intentionally Added PFAS

Warranty

10 years.

© 2023 Maharam

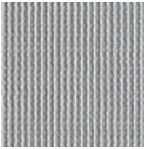
Complete product information at maharam.com
800.645.3943



001 Antarctic



002 Chill



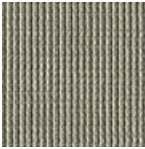
003 Perception



004 Mirror



005 Coherent



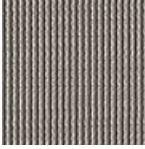
006 Parallax



007 Ladder



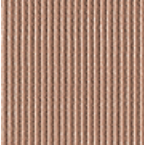
008 Stereo



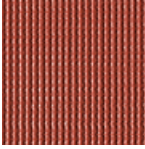
009 Glimmer



010 Farro



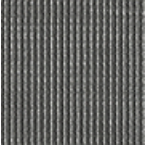
011 Darling



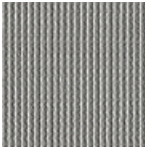
012 Inferno



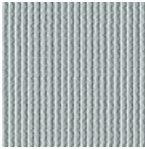
013 Robotic



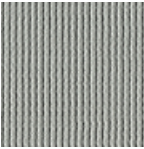
014 Ponder



015 Homespun



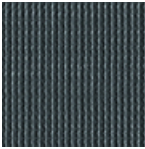
016 Seaglass



017 Emotive



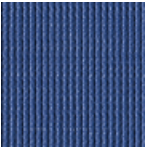
018 Sanctuary



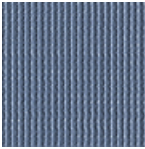
019 Journey



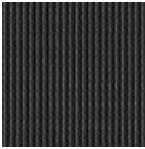
020 Rise



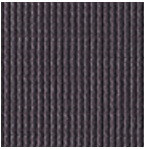
021 Teardrop



022 Swim



023 Labyrinth



024 Reckon