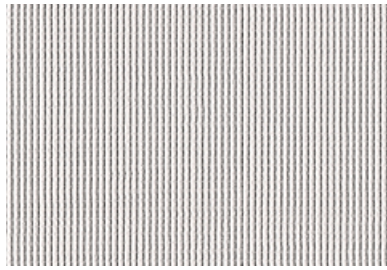
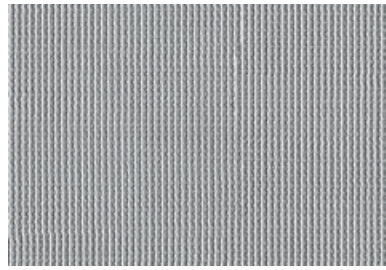


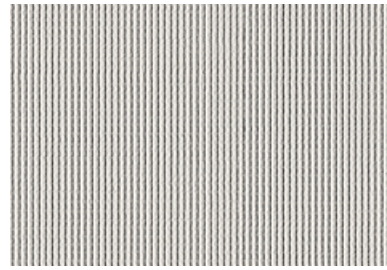
001 Antarctic



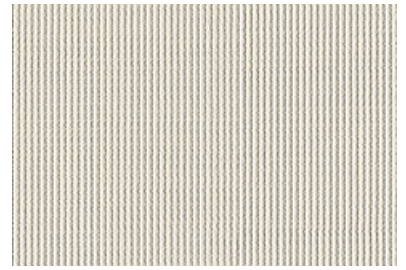
002 Chill



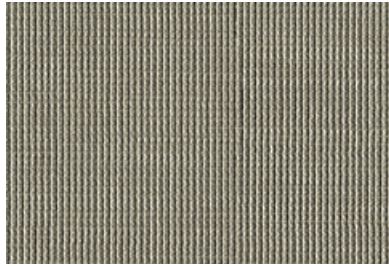
003 Perception



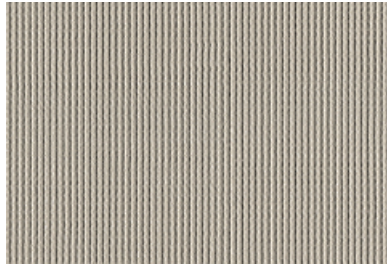
004 Mirror



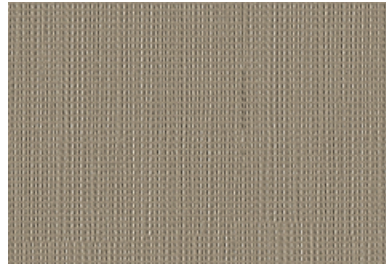
005 Coherent



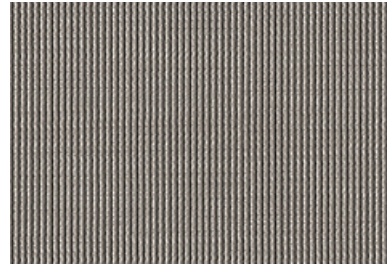
006 Parallax



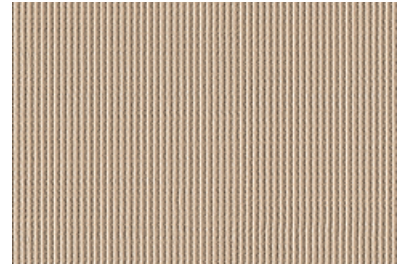
007 Ladder



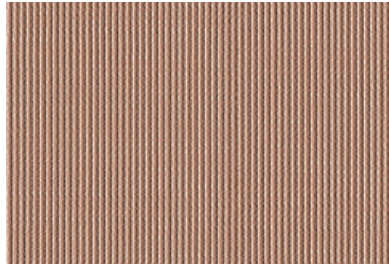
008 Stereo



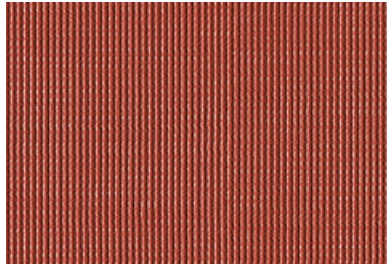
009 Glimmer



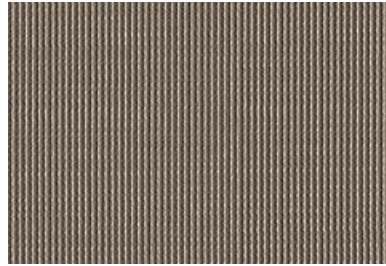
010 Farro



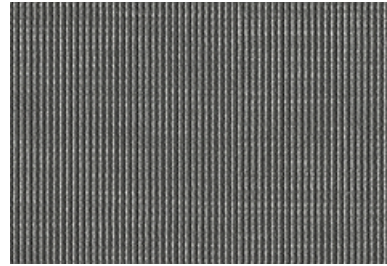
011 Darling



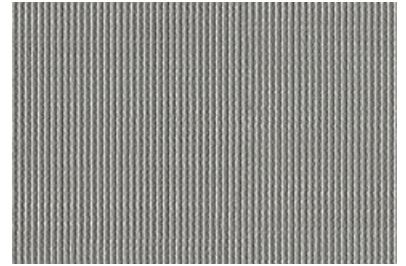
012 Inferno



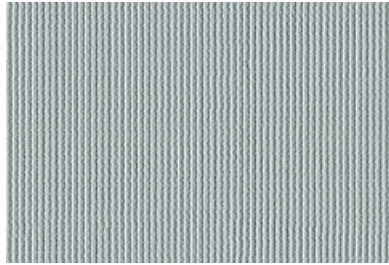
013 Robotic



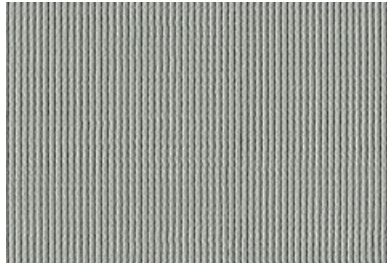
014 Ponder



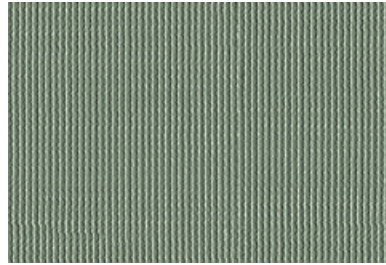
015 Homespun



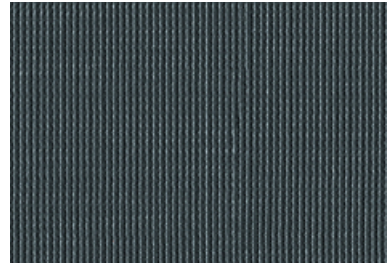
016 Seaglass



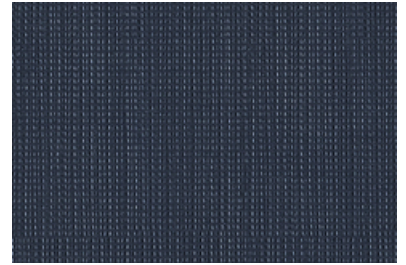
017 Emotive



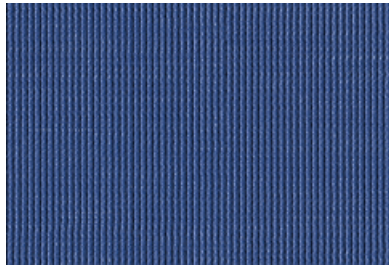
018 Sanctuary



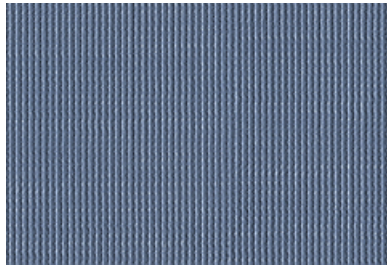
019 Journey



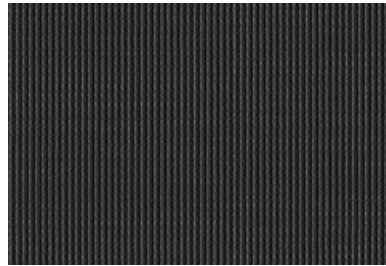
020 Rise



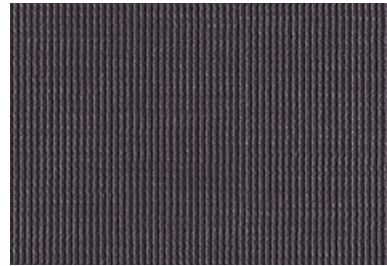
021 Teardrop



022 Swim



023 Labyrinth



024 Reckon

Application

Walls

Characteristics


Content: 100% Non-Phthalate Vinyl
Finish: None
Backing: Polyester/Cotton Osnaburg
Width: 54" (137cm)
Repeat: Non-match
Bolt Size: 30 yards (27 m)
Class: Type II
Weight: 20 oz/ly (600 gr/lm)
Traffic: High Traffic
Country of Origin: USA
Note on Mold: Intended for use in buildings designed and maintained to avoid moisture on or within walls.
Application must conform to current Installation Guidelines included in each shipment or available at maharam.com.

Price


\$33.00 / C\$51.75 (FOB destination)
C\$47.25 (FOB origin)

Testing

Flammability: ASTM E84 Adhered
BS 476 Adhered*
CAN ULC S102 Adhered
EN 13501 Adhered
GB 8624 Adhered*
*passes with additional treatment

Lightfastness: AATCC 16.3, 200+ hours


Maintenance

W/B-Clean with water-based cleanser or diluted household bleach.


Environmental

FR Free
Free of Intentionally Added PFAS

Warranty

10 years. See Terms and Conditions for more information.

© 2023 Maharam

Last updated May 1, 2025