

# Specifications

**maharam**

Luce

466566

## Application

Seating, Upholstered Walls

Note: This textile is available as a made-to-order pillow. Although pattern passes flammability, please be advised that the wool content in this product tends to absorb moisture. Puddling, sagging, and shrinkage at the seams can occur if the installation is not 24/7 climate controlled. There can also be issues with shading as this pattern is piece dyed.

## Characteristics

Content: 75% Post-Consumer Recycled Wool, 20% Polyester, 5% Nylon

Finish: None

Additional Finishes Available: Alta, Alta Food & Beverage, Nanotex, Nanotex with Impermeable Barrier, Stain Repellent Finish

Backing: None

Width: 59" (150cm)

Bolt Size: 44 yards (40 m)

Weight: 17.1 oz/ly (500 gr/lm)

Country of Origin: Italy

## Price

\$81.50 / C\$120.00 (FOB destination) / C\$116.50 (FOB origin)

## Maintenance

S-Clean with mild, water-free dry cleaning solvent.



## Testing

Abrasion: ASTM D4966, 100,000 cycles Martindale

Note: Abrasion test results exceeding ACT Performance Guidelines are not an indicator of product lifespan.

Multiple factors affect fabric durability and appearance retention.

Acoustics: ASTM C423, 0.85 NRC

Flammability: AS/NZS 3837 Unadhered

ASTM E84 Unadhered

BS 5852 - PART 1\*

BS 5852 Crib 5\*

CAL 117-2013

EN 1021-1

EN 1021-2

EN 13501 Unadhered\*

GB/T 17591\*

ISO 5660 Unadhered

\*passes with additional treatment

Lightfastness: AATCC 16.3, 40+ hours



## Specifications

Luce

466566

**maharam**

### **Environmental**

Greenguard Gold Certified

GRS Certified Content

Oeko-Tex Certified

LBC Red List Free

REACH Compliant

Contains Bio-Based Content

Contains Recycled Content

FR Free

Free of Intentionally Added PFAS

### **Warranty**

3 years: Indoor Seating

3 years: Upholstered Walls.

© 2021 Maharam

Complete product information at [maharam.com](https://maharam.com)

800.645.3943

Specifications  
Luce  
466566

**maharam**



001 Brioche



002 Blanched



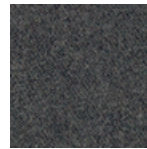
003 Relic



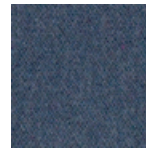
004 Sinter



005 Scoria



006 Austere



007 Pigment



008 Alkali



009 Tidal



010 Imbue



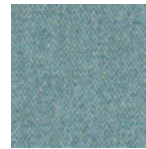
011 Reservoir



012 Brine



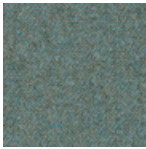
013 Undertone



014 Prelude



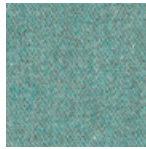
015 Submerge



016 Cypress



017 Awash



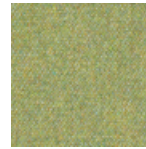
018 Adriatic



019 Province



020 Virescent



021 Nettle



022 Agrarian



023 Serpentine



024 Laurel



025 Clarion



026 Gooseberry



027 Swelter



028 Etruscan



029 Coulis



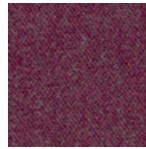
030 Rubescent



031 Akoya



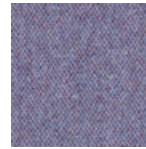
032 Radiant



033 Regent



034 Spectral



035 Thistle