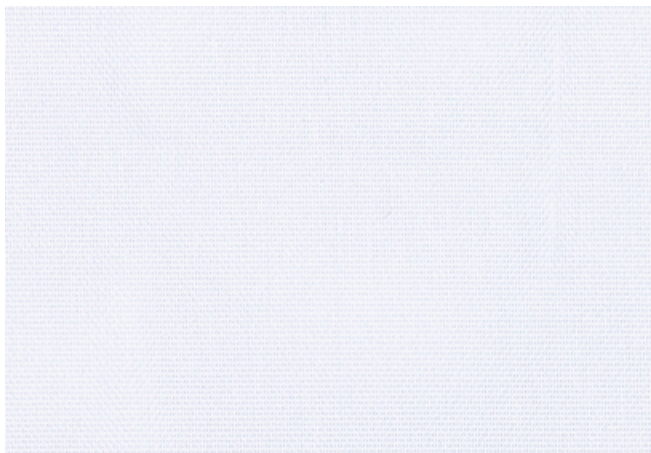




001 Sheer



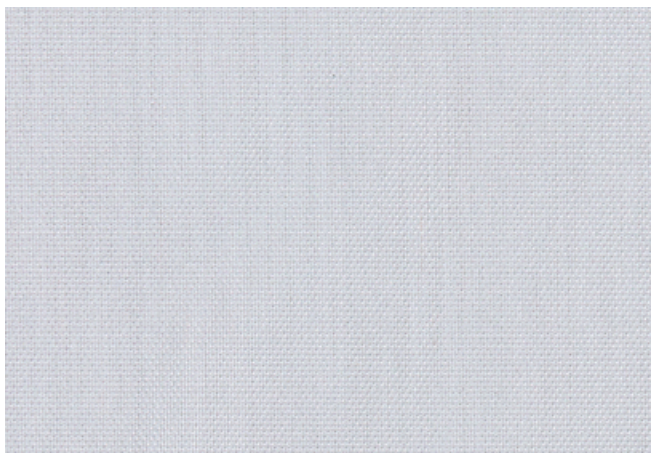
002 Brulee



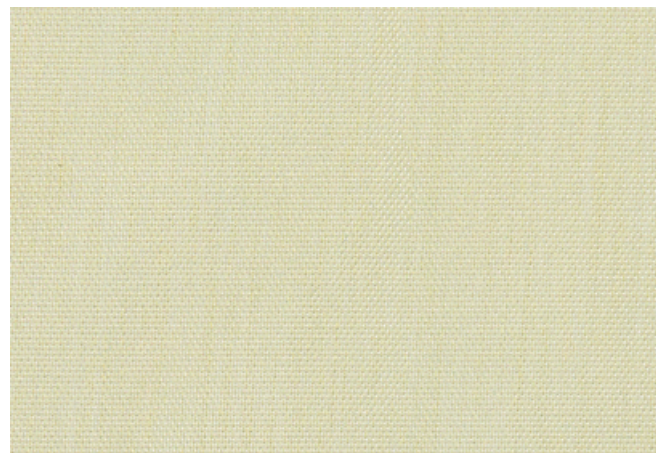
003 Nude



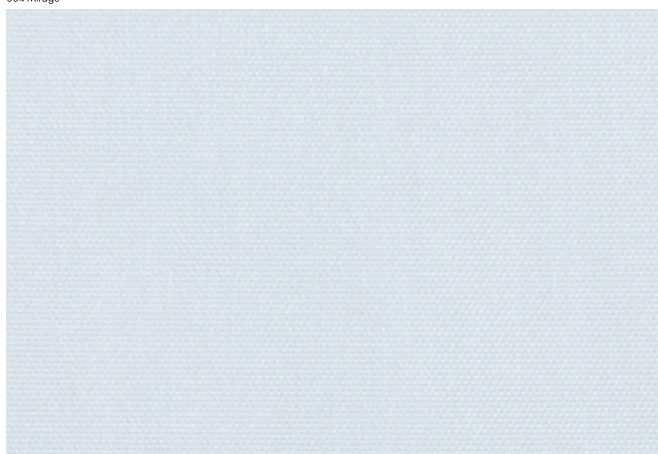
004 Mirage



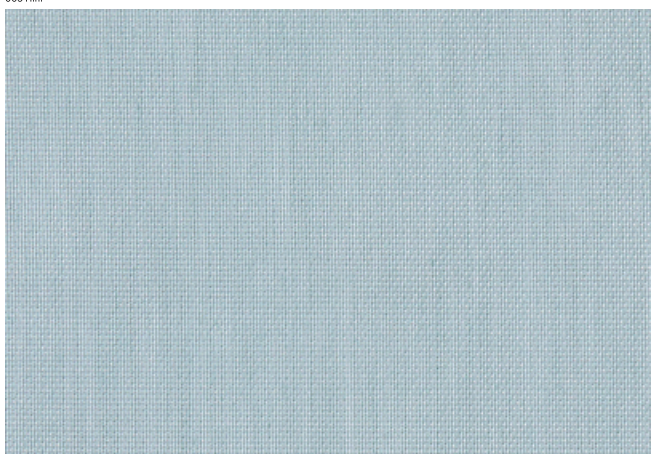
005 Hint



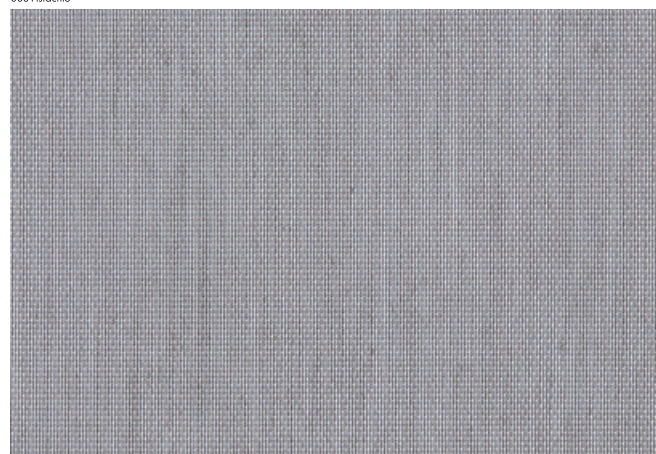
006 Pistachio



007 Mint



008 Coastal



010 Solstice



Application

Windows

Characteristics

Content: 78% Trevira CS Polyester, 22% FR Polyester  
Finish: None  
Backing: None  
Width: 118" (300cm)  
Bolt Size: 66 yards (60 m)  
Weight: 8.5 oz/ly (300 gr/lm)  
Country of Origin: Germany  
Note: Shown railroaded. Reversible.

Price






\$127.00 / C\$185.00 (FOB destination)  
C\$181.50 (FOB origin)

Testing

Acoustics: ISO 354, 0.35 NRC  
ISO 354, 0.55 NRC  
  
Flammability: AS/NZS 1530.3  
BS 5867  
CAN ULC S109  
GB/T 17591  
NFPA 701

Lightfastness: AATCC 16.3, 60+ hours  
   

Maintenance

Dry clean only.  
    

Environmental

Greenguard Gold Certified  
Oeko-Tex Certified  
REACH Compliant  
Free of Intentionally Added PFAS

Warranty

1 year. See Terms and Conditions for more information.

© 2017 Maharam

Last updated August 2, 2025