

Specifications

maharam

Lumen

399981

Application

Upholstered Walls

Note: This textile is available backed.

Characteristics

Content: 100% Polyethylene

Finish: None

Backing: None

Width: 54" (137cm)

Bolt Size: 55 yards (50 m)

Weight: 9.5 oz/ly (300 gr/lm)

Traffic: High Traffic

Country of Origin: USA

Price

\$42.50 / C\$64.25 (FOB destination) / C\$60.75 (FOB origin)

Maintenance

W/S/B-Clean with water-based cleanser; mild, water-free dry cleaning solvent, or diluted household bleach.

☒ △ ☒ ☒ Ⓜ

Testing

Acoustics: ASTM C423, 0.80 NRC

Flammability: AS/NZS 3837 Unadhered

ASTM E84 Unadhered

EN 13501 Unadhered*

ISO 5660 Unadhered

*passes with additional treatment

Lightfastness: AATCC 16.3, 100+ hours

☀ 🔥 💧 ☆ 🏠

Specifications

Lumen

399981

maharam

Environmental

Greenguard Gold Certified

Healthier Hospitals Compliant

LBC Red List Free

REACH Compliant

FR Free

Free of Intentionally Added PFAS

Warranty

3 years.

© 2018 Maharam

Complete product information at maharam.com

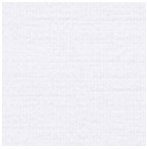
800.645.3943

Specifications

Lumen

399981

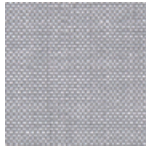
maharam



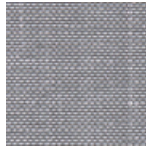
001 Swan



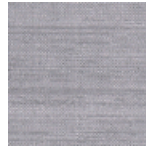
002 Gown



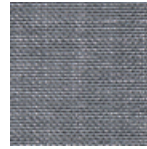
003 Bubble



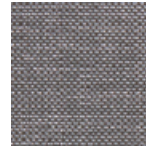
004 Metallic



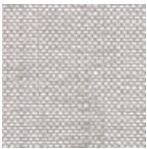
005 Lock



006 Cyberspace



007 Rhino



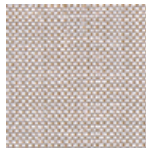
008 Lighthouse



009 Headdress



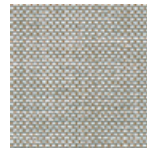
010 Hayride



011 Caramel



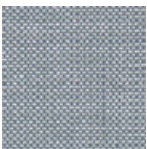
012 Trophy



013 Aviary



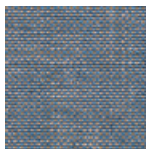
014 Secret



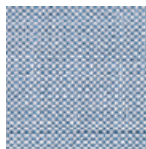
015 Boat



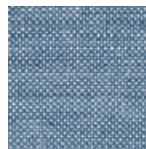
016 Nursery



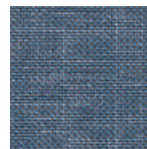
017 Cosmos



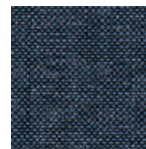
018 Whirlpool



019 Aerial



020 Stream



021 Butterfly



022 Cloak



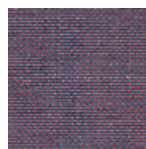
023 Silhouette



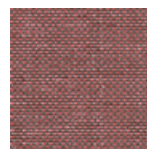
024 Tarmac



025 Grotto



026 Festival



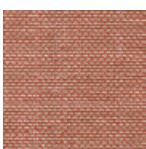
027 Sleigh



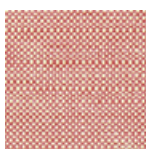
028 Geranium



029 Koi



030 Feast



031 Hive



032 Seahorse



033 Sparkler