

Specifications

Margin

650044

maharam

Application

Floors

Characteristics

Content: 100% Wool

Finish: None

Backing: Jute / Polyester / Latex

Width: 144" (366cm)

Repeat: 144" H

(366cm H)

Bolt Size: 30 yards (27 m)

Weight: 7.9 oz/ly (200 gr/lm)

Traffic: High Traffic with Casters for Stairs and Corridors

Country of Origin: USA

Note: Variations in color and texture are inherent to this textile.

Price

\$296.00 / C\$427.50 (FOB destination) / C\$423.00 (FOB origin)

Maintenance

X-Vacuum or brush lightly to remove surface dust.

☒ ☒ ☒ ☒ ☒

Testing

Flammability: ASTM D2859/CPSC FF 1-70/FF 2-70/16 CFR1630

Lightfastness: AATCC 16.3, 40+ hours

Specifications
Margin
650044

maharam

Environmental

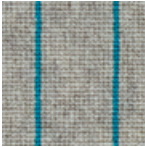
LBC Red List Free
Contains Bio-Based Content
FR Free
Free of Intentionally Added PFAS

Warranty

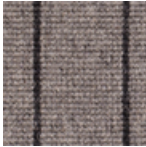
2 years.

© 2017 Maharam

Complete product information at maharam.com
800.645.3943



001 Teal



002 Cinder



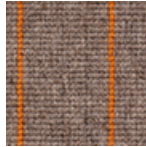
003 Phthalo



004 Charcoal



005 Engine



006 Mandarin