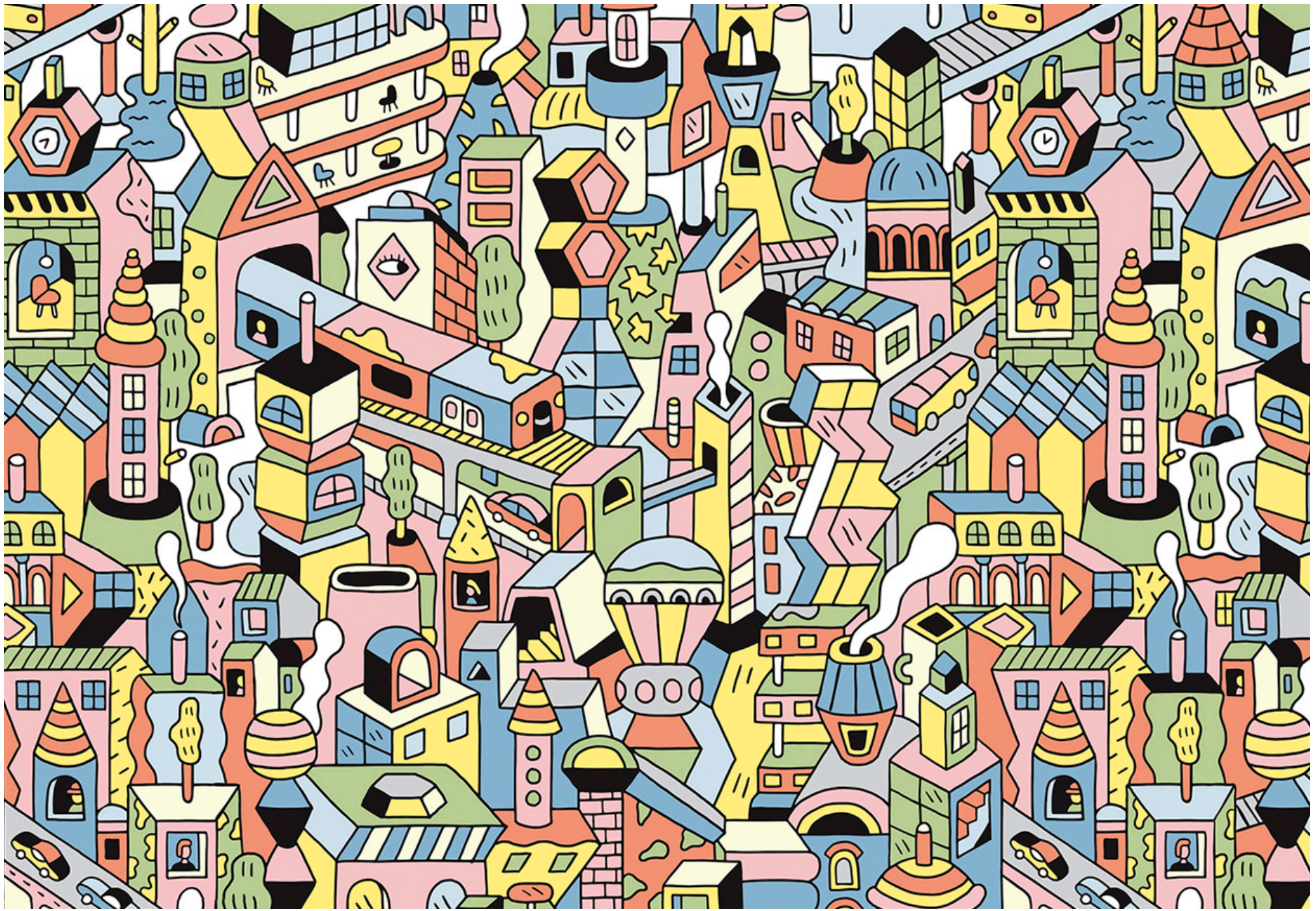




399647 Metropolis

**maharam**





001



Design

Andy Rementer

Application

Walls

Characteristics

Content: 65% Cellulose, 35% Latex  
Finish: PFAS-Free Protective Topcoat  
Backing: None  
Reference Dimension: 10' H x 15' W (305cm x 457cm)  
Traffic: Moderate Traffic  
Customs: Repeatable, Scalable  
Note: Colors depicted are not an exact representation of the final product. Please request a substrate sample for accurate quality and color reference.  
Note on Mold: Intended for use in buildings designed and maintained to avoid moisture on or within walls.  
Application must conform to current Installation Guidelines included in each shipment or available at maharam.com.

Price

Installation is sized, priced and produced on a project-specific basis.

Maintenance

W-Clean with water-based cleanser.



Testing

Flammability: AS/NZS 3837 Adhered  
ASTM E84 Adhered  
CAN ULC S102 Adhered  
ISO 5660 Adhered

Lightfastness: AATCC 16.3, 40+ hours

Environmental

Greenguard Gold Certified  
LBC Red List Free  
Contains Bio-Based Content  
FR Free  
Free of Intentionally Added PFAS

Brief

Through a complex maze of commuters, trains, cars, and infrastructure, Metropolis captures the bustling nature of the urban environment. Upon closer inspection, interactions between people and anthropomorphic buildings emerge.

Warranty

3 years. See Terms and Conditions for more information.

© 2014 Andy Rementer, Maharam under license

Last updated July 17, 2025