

Specifications

Multiply

466341

maharam

Application

Seating

Upholstered Walls require additional finishes.

Characteristics

Content: 57% Post-Consumer Recycled Polyester, 43% Post-Industrial Recycled Polyester

Finish: PFAS-Free Water Repellent

Additional Finishes Available: Alta, Alta Food & Beverage, Crypton, Nanotex, Nanotex with Impermeable Barrier

Backing: Acrylic

Width: 58" (147cm)

Repeat: 14" V, 7 1/4" H

(36cm V, 18cm H)

Railroaded Repeat: 7 1/4" V, 14" H

(18cm V, 36cm H)

Bolt Size: 30 yards (27 m)

Weight: 19 oz/ly (600 gr/lm)

Country of Origin: USA

Note: Shown railroaded.

Price

\$51.50 / C\$77.25 (FOB destination) / C\$73.75 (FOB origin)

Maintenance

W/S/B-Clean with water-based cleanser; mild, water-free dry cleaning solvent, or diluted household bleach.

☒ △ ☒ ☒ Ⓜ

Testing

Abrasion: ASTM D4157, 60,000 double rubs Wyzenbeek

Note: Abrasion test results exceeding ACT Performance Guidelines are not an indicator of product lifespan.

Multiple factors affect fabric durability and appearance retention.

Flammability: AS/NZS 1530.3

AS/NZS 3837 Unadhered

ASTM E84 Unadhered

BS 5852 Crib 5*

CAL 117-2013

CAN ULC S102 Unadhered

EN 1021-1*

EN 1021-2*

EN 13501 Unadhered*

GB/T 17591*

ISO 5660 Unadhered

*passes with additional treatment

Lightfastness: AATCC 16.3, 40+ hours

☐ ☀ ☕ ☪ ☼

Specifications

Multiply

466341

maharam

Environmental

Greenguard Gold Certified
LBC Red List Free
Contains Recycled Content
FR Free
Free of Intentionally Added PFAS

Warranty

3 years: Indoor Seating
3 years: Upholstered Walls.

© 2017 Maharam

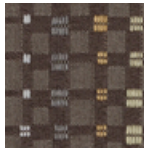
Complete product information at maharam.com
800.645.3943



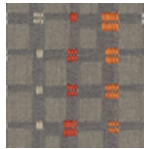
001 Winter



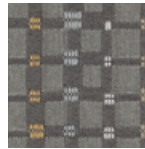
002 Encore



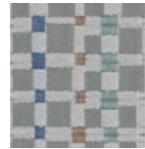
003 Swing



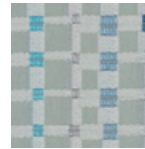
004 Contrast



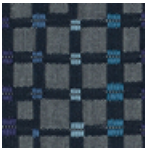
005 Sterling



006 Daze



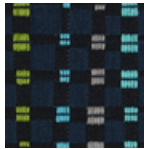
007 Sway



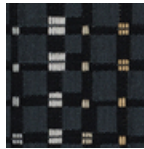
008 Sailor



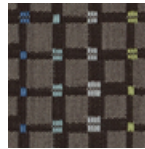
009 Mystique



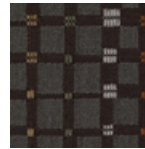
010 Deep



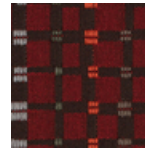
011 Craft



012 Town



013 Limit



014 Tamale