



001 Winter



002 Encore



003 Swing



004 Contrast



005 Sterling



006 Daze



007 Sway



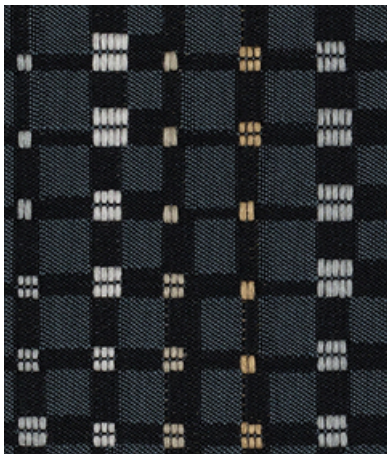
008 Sailor



009 Mystique



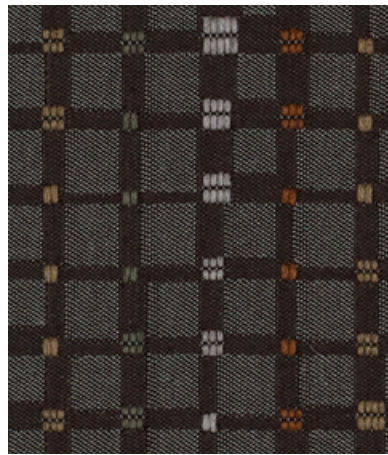
010 Deep



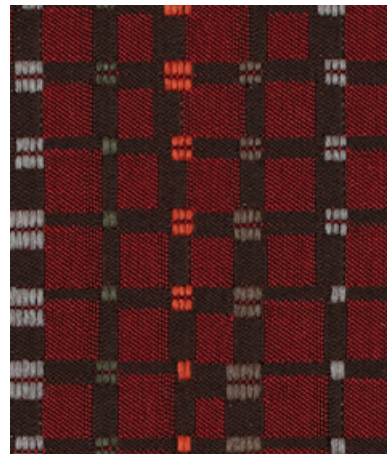
011 Craft



012 Town



013 Limit



014 Tamale

466341 Multiply

maharam

Application

Seating
Upholstered Walls require additional finishes.

Characteristics

Content: 57% Post-Consumer Recycled Polyester, 43% Post-Industrial Recycled Polyester
Finish: PFAS-Free Water Repellent
Additional Finishes Available: Alta, Alta Food & Beverage, Crypton, Nanotex, Nanotex with Impermeable Barrier
Backing: Acrylic
Width: 58" (147cm)
Repeat: 14" V, 7 1/4" H (36cm V, 18cm H)
Railroaded Repeat: 7 1/4" V, 14" H (18cm V, 36cm H)
Bolt Size: 30 yards (27 m)
Weight: 19 oz/ly (600 gr/lm)
Country of Origin: USA
Note: Shown railroaded.

Price

\$51.50 / C\$78.25 (FOB destination)
C\$73.75 (FOB origin)

Testing

Abrasion: ASTM D4157, 60,000 double rubs Wyzenbeek
Note: Abrasion test results exceeding ACT Performance Guidelines are not an indicator of product lifespan. Multiple factors affect fabric durability and appearance retention.

Flammability: AS/NZS 1530.3
AS/NZS 3837 Unadhered
ASTM E84 Unadhered
BS 5852 Crib 5*
CAL 117-2013
CAN ULC S102 Unadhered
EN 1021-1*
EN 1021-2*
EN 13501 Unadhered*
GB/T 17591*
ISO 5660 Unadhered
*passes with additional treatment

Lightfastness: AATCC 16.3, 40+ hours



Maintenance

W/S/B-Clean with water-based cleanser; mild, water-free dry cleaning solvent, or diluted household bleach.



Environmental

Greenguard Gold Certified
LBC Red List Free
Contains Recycled Content
FR Free
Free of Intentionally Added PFAS

Warranty

3 years: Indoor Seating
3 years: Upholstered Walls.
See Terms and Conditions for more information.

© 2017 Maharam

Last updated May 1, 2025