



001 Glider



002 Cushaw



003 Harp



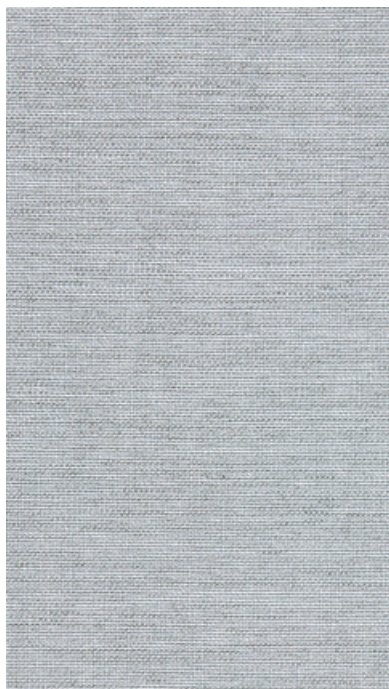
004 Freshwater



005 Bentonite



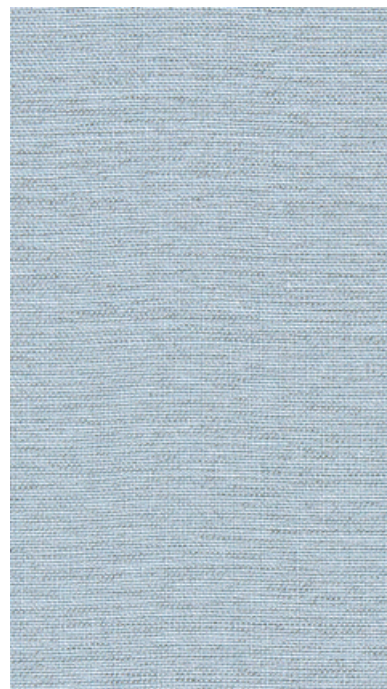
006 Sisal



007 Evoke



008 Brume



009 Aegis



010 Pane

**Application**

Upholstered Walls, Windows

**Characteristics**

Content: 100% Trevira CS Polyester  
Finish: None  
Backing: None  
Width: 54" (137cm)  
Bolt Size: 65 yards (59 m)  
Weight: 12.5 oz/ly (400 gr/lm)  
Country of Origin: Germany  
Note: Reversible.

**Price**

\$63.00 / C\$93.50 (FOB destination)  
C\$90.00 (FOB origin)

**Testing**

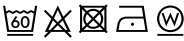
Flammability: ASTM E84 Unadhered  
BS 5867  
CAN ULC S109  
EN 13501 Unadhered  
GB 8624  
NFPA 701

Lightfastness: AATCC 16.3, 60+ hours



**Maintenance**

Machine wash to 140°F (60°C). Air or cabinet dry only. Do not tumble dry.



**Environmental**

Greenguard Gold Certified  
Oeko-Tex Certified  
LBC Red List Free  
REACH Compliant  
Free of Intentionally Added PFAS

**Warranty**

1 year: Windows  
3 years: Upholstered Walls.  
See Terms and Conditions for more information.

© 2021 Maharam

Last updated August 2, 2025