



001 Pumice



002 Froth



003 Natural



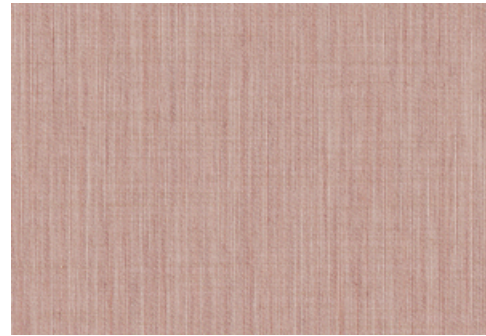
004 Tarnished



005 Elixir



006 Doe



007 Rosepetal



008 Doline



009 Ruminant



010 Poesy



011 Stonewash



012 Beau



013 Narrative





014 Precipice



015 Graze



016 Luminous

Application Windows	Price \$70.00 / C\$104.50 (FOB destination) C\$100.00 (FOB origin)	Maintenance Machine wash to 86°F (30°C). Extract gently. Air or cabinet dry only. Do not tumble dry. 
Characteristics Content: 100% Trevira CS Polyester Finish: None Backing: None Width: 131" (333cm) Bolt Size: 65 yards (59 m) Weight: 7.3 oz/ly (200 gr/lm) Country of Origin: Italy Note: Shown railroaded. Reversible.	Testing Flammability: ASTM E84 Unadhered BS 5867 CAN ULC S109 NFPA 701 Lightfastness: AATCC 16.3, 60+ hours 	Environmental Greenguard Gold Certified Oeko-Tex Certified REACH Compliant Free of Intentionally Added PFAS Warranty 1 year. See Terms and Conditions for more information. © 2025 Maharam Last updated May 1, 2025