



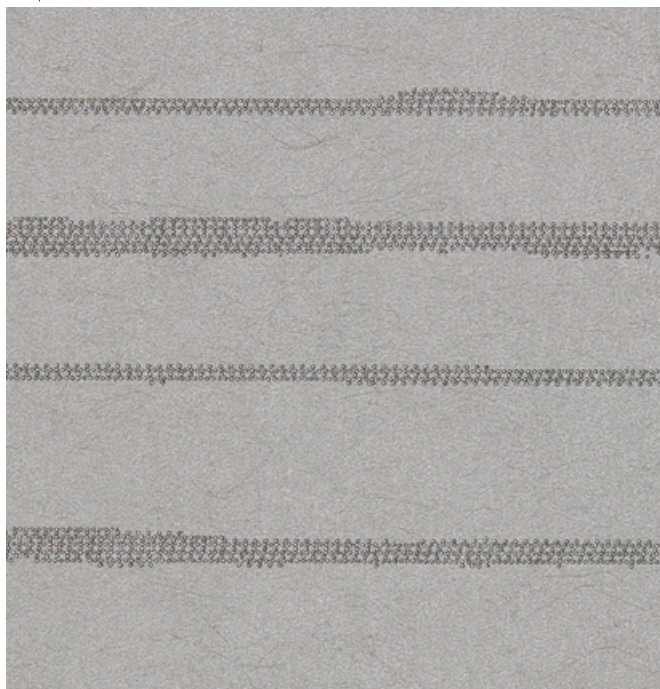
001 Elope



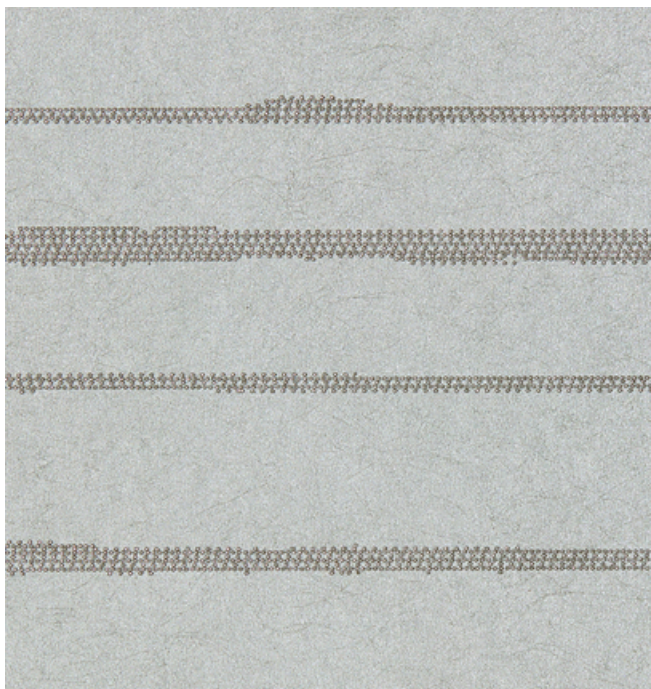
002 Elevation



003 Sunbathe



004 Jazz



005 Dolomite

300058 Ore

maharam

Application Walls	Price \$81.50 /	Maintenance X-Vacuum or brush lightly to remove surface dust. ☒☒☒☒☒
Characteristics Content: 70% Cellulose, 30% Polyester Finish: PFAS-Free Water Repellent Backing: Cellulose / Polyester Width: 54" (137cm) Repeat: 16 3/4" H (43cm H) Bolt Size: 55 yards (50 m) Weight: 15.2 oz/ly (500 gr/lm) Traffic: Moderate Traffic Country of Origin: Netherlands Note: Variations in color and texture are inherent to this textile. Note on Mold: Intended for use in buildings designed and maintained to avoid moisture on or within walls. Application must conform to current Installation Guidelines included in each shipment or available at maharam.com.	Testing Flammability: ASTM E84 Adhered EN 13501 Adhered Lightfastness: AATCC 16.3, 40+ hours ☀️🔥👉	Environmental Greenguard Gold Certified Healthier Hospitals Compliant LBC Red List Free REACH Compliant Contains Bio-Based Content Contains Forest Stewardship Council (Fsc) Certified Content FR Free Free of Intentionally Added PFAS Warranty 1 year. See Terms and Conditions for more information. © 2019 Maharam Last updated July 2, 2025