

Specifications

Parallel

901180

maharam

Application

Systems, Upholstered Walls

Windows require additional finishes.

Note: For window application, a blackout liner is recommended.

Characteristics

Content: 58% Post-Industrial Recycled Polyester, 42% Post-Consumer Recycled Polyester

Finish: None

Additional Finishes Available: Flame Resistant Finish , Stain Repellent Finish

Backing: None

Width: 66" (168cm)

Bolt Size: 60 yards (55 m)

Weight: 12.9 oz/ly (400 gr/lm)

Country of Origin: USA

Price

\$46.50 / C\$70.00 (FOB destination) / C\$66.50 (FOB origin)

Maintenance

W/S/B-Clean with water-based cleanser; mild, water-free dry cleaning solvent, or diluted household bleach.



Testing

Acoustics: ASTM C423, 0.75 NRC

Flammability: AS/NZS 3837 Unadhered

ASTM E84 Adhered*

ASTM E84 Unadhered

CAN ULC S102 Unadhered

GB 8624 Unadhered*

NFPA 701*

*passes with additional treatment

Lightfastness: AATCC 16.3, 40+ hours



Specifications
Parallel
901180

maharam

Environmental

Greenguard Gold Certified
Healthier Hospitals Compliant
LBC Red List Free
Contains Recycled Content
FR Free
Free of Intentionally Added PFAS

Warranty

3 years.

© 2002 Maharam

Complete product information at maharam.com
800.645.3943



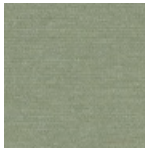
002 Argent



003 Fog



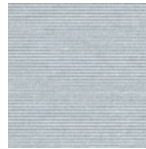
023 Linen



024 Pea



027 Boulder



028 Steam



029 Shiitake